



**Hitachi Freedom Storage™  
Lightning 9900™ V Series**

**Windows® 2000 Configuration Guide**



© 2002 Hitachi Data Systems Corporation, ALL RIGHTS RESERVED

**Notice:** No part of this publication may be reproduced or transmitted in any form or by any means, electronic or mechanical, including photocopying and recording, or stored in a database or retrieval system for any purpose without the express written permission of Hitachi Data Systems Corporation.

Hitachi Data Systems reserves the right to make changes to this document at any time without notice and assumes no responsibility for its use. Hitachi Data Systems products and services can only be ordered under the terms and conditions of Hitachi Data Systems' applicable agreements. All of the features described in this document may not be currently available. Refer to the most recent product announcement or contact your local Hitachi Data Systems sales office for information on feature and product availability.

This document contains the most current information available at the time of publication. When new and/or revised information becomes available, this entire document will be updated and distributed to all registered users.

## Trademarks

Hitachi Data Systems is a registered trademark and service mark of Hitachi, Ltd., and the Hitachi Data Systems design mark is a trademark and service mark of Hitachi, Ltd.

Hitachi Freedom Storage, Lightning 9900 V Series, Virtual LVI/LUN (VLL), Virtual Logical Unit (VirtLUN), and RapidXchange are registered trademarks of Hitachi Data Systems

LightPulse is a trademark of Emulex Corporation.

ESCON and S/390 are registered trademarks of International Business Machines Corporation (IBM).

Intel and Pentium are registered trademarks of Intel Corporation.

Microsoft and Windows are registered trademarks of Microsoft Corporation.

All other brand or product names are or may be trademarks or service marks of and are used to identify products or services of their respective owners.

## Notice of Export Controls

Export of technical data contained in this document may require an export license from the United States government and/or the government of Japan. Please contact the Hitachi Data Systems Legal Department for any export compliance questions.

## Document Revision Level

Revision	Date	Description
MK-92RD121-P	March 2002	Preliminary Release.
MK-92RD121-P1	April 2002	Supersedes and replaces MK-92RD121-P.
MK-92RD121-0	April 2002	Initial Release.

## Source Document used in this Revision

The following source documents were used to produce this Lightning 9900™ V Series configuration guide:

- *Hitachi Freedom Storage™ Lightning 9900™ Windows® 2000 Configuration Guide (MK-90RD025)*
- *Hitachi Freedom Storage™ Lightning 9900™ V Series LUN Manager's User's Guide (MK-92RD105)*
- RSD reviews of this document

## Changes in this Revision

- Updated Emulex HBA information (section 2.6.1)

# Preface

The *Hitachi Freedom Storage™ Lightning 9900™ V Series Windows® 2000 Configuration Guide* describes and provides instructions for configuring the devices on the 9900V Series (9900V) array subsystem for operation with the Microsoft® Windows® 2000 operating system (OS). This configuration guide assumes that:

- The user has a background in data processing and understands direct-access storage device (DASD) subsystems and their basic functions,
- The user is familiar with the 9900V array subsystems, and
- The user is familiar with the Microsoft® Windows® 2000 Server and/or Windows® 2000 Professional operating systems, the Win2000 server/workstation, and the fibre-channel adapters.
- The user understands the differences between Basic Disk and Dynamic Disk. Please refer to the Microsoft® online help for information regarding these.

**Note:** The term “9900V Series” refers to the entire Hitachi Freedom Storage™ Lightning Storage Lightning 9900™ V Series subsystem family, unless otherwise noted. Please refer to the *Hitachi Freedom Storage™ Lightning 9900™ V Series User and Reference Guide* (MK-92RD100) for further information on the 9900V disk array subsystems.

For further information on Windows® 2000, please consult the Windows® 2000 online help and/or user documentation, or contact Microsoft® technical support.

## COMMENTS

Please send us your comments on this document: [doc.comments@hds.com](mailto:doc.comments@hds.com).

**Make sure to include the document title, number, and revision.  
Please refer to specific page(s) and paragraph(s) whenever possible.  
(All comments become the property of Hitachi Data Systems Corporation.)**

**Thank you!**



# Contents

<b>Chapter 1</b>	<b>Overview of Lightning 9900™ V Windows® 2000 Configuration.....</b>	<b>1</b>
1.1	Lightning 9900™ V Windows® 2000 Configuration .....	1
1.2	Lightning 9900™ V Array Subsystem.....	1
1.3	Device Types and Configuration Procedures.....	2
<b>Chapter 2</b>	<b>Preparing for New Device Configuration .....</b>	<b>7</b>
2.1	Configuration Requirements .....	7
2.2	Installing the 9900V Subsystem.....	8
2.3	Preparing to Connect the 9900V Subsystem .....	9
2.3.1	Setting the Host Mode for the 9900V Ports .....	9
2.3.2	Configuring the 9900V Fibre-Channel Ports .....	10
2.4	Connecting the 9900V Subsystem and Recording the Disk Numbers .....	13
2.5	Configuring the Host Fibre-Channel Adapters.....	16
2.5.1	Configuring the Windows® 2000 Boot Disk on the 9900V Subsystem.....	19
2.6	Verifying the Disk and Device Parameters .....	20
2.6.1	Verifying the Disk I/O Timeout Value (TOV) .....	20
2.6.2	Verifying the Device Parameters.....	22
<b>Chapter 3</b>	<b>Configuring the New Devices .....</b>	<b>27</b>
3.1	Writing the Signatures .....	27
3.2	Creating and Formatting the Partitions .....	30
3.3	Verifying File System Operations.....	36
3.4	Verifying Auto-Mount.....	38
<b>Chapter 4</b>	<b>Middleware and SNMP Configuration .....</b>	<b>39</b>
4.1	Host Fail-Over .....	39
4.2	Alternate I/O Path.....	40
4.3	SNMP Remote Subsystem Management .....	41
<b>Chapter 5</b>	<b>Troubleshooting.....</b>	<b>43</b>
5.1	Troubleshooting .....	43
5.2	Calling the Support Center .....	44
<b>Appendix A</b>	<b>SCSI TID Maps for Fibre-Channel Adapters .....</b>	<b>45</b>
	<b>Acronyms and Abbreviations .....</b>	<b>51</b>

## List of Figures

Figure 2.1	The Add New Host Group Panel .....	9
Figure 2.2	Port Mode Panel (Port Tab).....	11
Figure 2.3	Recording the Disk Numbers for the New Devices .....	14
Figure 2.4	Verifying/Setting the Disk I/O TOV Using the Registry Editor .....	21
Figure 2.5	LightPulse Utility/NT Panel.....	24
Figure 2.6	Modify Drive Parameter Panel .....	24
Figure 2.7	Verifying the Queue Depth (Emulex FC adapter shown) .....	25
Figure 3.1	Disk Management Panel Showing New Devices .....	28
Figure 3.2	Rebooting Your PC After Each New Device Is Added .....	29
Figure 3.3	Writing the Signatures.....	29
Figure 3.4	Create Partition Wizard Screen .....	31
Figure 3.5	Specify Partition Size .....	31
Figure 3.6	Assign Drive Letter or Path .....	32
Figure 3.7	Format Partition Window .....	32
Figure 3.8	Successful Formatting Confirmation Window .....	33
Figure 3.9	Opening the Format Panel .....	34
Figure 3.10	Formatting the Partition .....	34
Figure 3.11	Verifying the Formatted Partition .....	35
Figure 3.12	Displaying the Connected Devices.....	36
Figure 3.13	Verifying the New Device Properties.....	37
Figure 3.14	Verifying the File Copy Operation .....	37
Figure 4.1	Path Failover Configuration with 9900V Clustering .....	40
Figure 4.2	9900V SNMP Environment .....	41

## List of Tables

Table 1.1	9900V Device Specifications for Windows® 2000 Operations .....	4
Table 1.2	Volume Usage for Device Categories.....	5
Table 2.1	Fibre Topology Settings on the 9900V Remote Console .....	11
Table 2.2	Available AL-PA Values .....	12
Table 2.3	Sample SCSI Device Information Worksheet .....	15
Table 2.4	Execution Throttle (Queue Depth) Requirements for the 9900V Devices .....	16
Table 2.5	Fibre Adapter Configuration Requirements: Boot Disk .....	17
Table 5.1	Troubleshooting .....	43
Table A.1	SCSI TID Map for Emulex FC Adapter (ScanDown=0) .....	46
Table A.2	SCSI TID Map for Emulex FC Adapter (ScanDown=1) .....	48



# Chapter 1 Overview of Lightning 9900™ V Windows® 2000 Configuration

## 1.1 Lightning 9900™ V Windows® 2000 Configuration

This document describes the requirements and procedures for connecting the 9900V Series (9900V) subsystem to a Windows® 2000 server and configuring the new 9900V devices for operation with the Windows® 2000 operating system. The Hitachi Data Systems representative performs the physical installation of the 9900V subsystem. The user prepares for 9900V subsystem installation and configures the new 9900V devices with assistance as needed from the Hitachi Data Systems representative.

## 1.2 Lightning 9900™ V Array Subsystem

The Hitachi Lightning 9900™ V RAID subsystem supports concurrent attachment to multiple UNIX®-based and PC-server platforms. Please contact your Hitachi Data Systems account team for the latest information on platform support. The 9900V subsystem provides continuous data availability, high-speed response, scaleable connectivity, and expandable capacity for PC server and open-system storage. The 9900V subsystem can operate with multihost applications and host clusters, and is designed to handle very large databases as well as data warehousing and data mining applications that store and retrieve terabytes of data.

The Hitachi Lightning 9900™ V subsystem can be configured with fibre-channel, FICON™, and/or Extended Serial Adapter™ (ExSA™) (compatible with ESCON® protocol) ports to provide connectivity with S/390® mainframe hosts as well as open-system hosts. For further information on the 9900V subsystem, please refer to the *Hitachi Freedom Storage™ Lightning 9900™ V Series User and Reference Guide* (MK-92RD100), or contact your Hitachi Data Systems account team

## 1.3 Device Types and Configuration Procedures

The 9900V subsystem supports the following types of logical devices (also called volumes). Table 1.1 lists the device specifications for the 9900V devices. Table 1.2 shows the volume usage (i.e., file system or raw device) for the 9900V devices.

**OPEN-x Devices.** The OPEN-x logical units (LUs) (e.g., OPEN-3, OPEN-9) are disk devices of predefined sizes. The 9900V subsystem currently supports OPEN-3, OPEN-9, OPEN-E, and OPEN-L devices. Please contact your Hitachi Data Systems account team for the latest information on supported LU types.

**LUSE Devices (OPEN-x\*n).** The LUSE devices are combined LUs which can be from 2 to 36 times larger than standard OPEN- x LUs. The LUN Expansion (LUSE) feature of the 9900V subsystem enables you to configure these custom-size devices. LUSE devices are designated as OPEN- x \*n, where x is the LU type (e.g., OPEN-9\*n) and  $2 \leq n \leq 36$ . For example, a LUSE device created from ten OPEN-3 LUs would be designated as an OPEN-3\*10 disk device. This capability enables the server host to combine logical devices and access the data stored on the 9900V subsystem using fewer LU numbers (LUNs) For further information on the LUSE feature, please refer to the *Hitachi Freedom Storage™ Lightning 9900™ V Series LUN Manager User's Guide (MK-92RD105)*.

**VLL Devices (OPEN-x VLL).** The VLL devices are disk devices, which are used exclusively by the 2000 host system. The Virtual LVI/LUN (VLL) feature of the 9900V subsystem (also called Virtual Logical Unit [VirtLUN]) enables you to configure custom-size LUs that are smaller than standard OPEN- x LUs. This capability enables you to “slice up” a single LU into several smaller LUs to best fit the application needs and improve host access to frequently used files. For further information on the VLL feature, please refer to the *Hitachi Freedom Storage™ Lightning 9900™ V Series LUN Expansion (LUSE) Virtual LVI/LUN User's Guide (MK-92RD104)*.

**VLL LUSE Devices (OPEN-x\*n VLL).** The VLL LUSE devices combine VLL devices (instead of standard OPEN-x LUs) into LUSE devices. The VLL feature is used to create VLL devices, and then the LUSE feature is used to combine (concatenate) these VLL devices. The user can combine from 2 to 36 VLL devices into one VLL LUSE device. For example, an OPEN-3 LUSE volume that was created from ten OPEN-3 VLL volumes would be designated as an OPEN-3\*10 VLL device.

**Note:** The OPEN-L LU does not support Virtual LVI/LUN.

Configuration of the 9900V disk devices for Windows® 2000 operations includes:

- Verifying new device recognition (see section 2.4),
- Writing the signatures on the new disks (see section 3.1),
- Creating and formatting disk partitions (see section 3.2),
- Verifying file system operations (see section 3.3), and
- Verifying auto-mount (see section 3.4).

**HRX Devices (3390-3A/B/C, OPEN-x-HRXoto).** The Hitachi RapidXchange (HRX) feature of the 9900V subsystem enables user data to be shared across S/390®, UNIX®, and PC server platforms using special multiplatform volumes. The VLL feature can also be applied to HRX devices for maximum flexibility in volume size. For further information on HRX, please refer to the *Hitachi RapidXchange User's Guide*, or contact your Hitachi Data Systems account team.

The HRX devices are not SCSI disk devices. The HRX devices must be installed and accessed as raw devices. UNIX/PC server hosts must use HRX to access the HRX devices as raw devices (no disk partition, no file system, no mount operation).

**Note:** The 3390-3B devices are write-protected from UNIX/PC server access. The 9900V subsystem will reject all UNIX/PC server write operations (including fibre-channel adapters) for the 3390-3B and devices.

**WARNING:** The 3390-3A/C and OPEN-x-HRXoto devices are *not* write-protected for UNIX/PC server access. Do not execute any write operation by the fibre-channel adapters on these devices. Do not create a partition or file system on these devices. This will overwrite any data on the HRX device and also prevent the HRX software from accessing the device. Do not write a signature on the HRX devices, unless the devices will be operated in the Microsoft® Cluster Server (MSCS) environment.

Configuration of the 9900V HRX devices for operation with Windows® 2000 includes:

- Verifying new device recognition (see section 2.4).

For Microsoft® Cluster Server (MSCS) environments only, you must also write signatures (see section 3.1) on the HRX devices. For non-MSCS environments, **DO NOT** write signatures on the HRX devices.

**WARNING:** After a signature has been written on an HRX device (MSCS environment only), there is no way to distinguish the HRX device from a SCSI disk device. The user must exercise extreme caution not to accidentally partition and format an HRX device. This will overwrite any data on the HRX device and also prevent the HRX software from accessing the device.

**Table 1.1 9900V Device Specifications for Windows® 2000 Operations (continues on next page)**

<b>Device Type (Note 1)</b>	<b>Category (Note 2)</b>	<b>Vendor Name</b>	<b>Product Name</b>	<b># of Blocks (512-byte blk)</b>	<b>Sector Size (bytes)</b>	<b># of Data Cylinders</b>	<b># of Heads</b>	<b># of Sectors per Track</b>	<b>Capacity MB (Note 3)</b>
OPEN-3	SCSI disk	HITACHI	OPEN-3	4806720	512	3338	15	96	2347
OPEN-9	SCSI disk	HITACHI	OPEN-9	14423040	512	10016	15	96	7042
OPEN-E	SCSI disk	HITACHI	OPEN-E	28452960	512	19759	15	96	13893
OPEN-L	SCSI disk	HITACHI	OPEN-L	71192160	512	49439	15	96	34761
OPEN-3*n	SCSI disk	HITACHI	OPEN-3*n	4806720*n	512	3338*n	15	96	2347*n
OPEN-9*n	SCSI disk	HITACHI	OPEN-9*n	14423040*n	512	10016*n	15	96	7042*n
OPEN-E*n	SCSI disk	HITACHI	OPEN-E*n	28452960*n	512	19759*n	15	96	13893*n
OPEN-L*n	SCSI disk	HITACHI	OPEN-L*n	71192160*n	512	49439*n	15	96	34761*n
OPEN-3 VLL	SCSI disk	HITACHI	OPEN-3-CVS	<b>Note 4</b>	512	<b>Note 5</b>	15	96	<b>Note 6</b>
OPEN-9 VLL	SCSI disk	HITACHI	OPEN-9- CVS	<b>Note 4</b>	512	<b>Note 5</b>	15	96	<b>Note 6</b>
OPEN-E VLL	SCSI disk	HITACHI	OPEN-E- CVS	<b>Note 4</b>	512	<b>Note 5</b>	15	96	<b>Note 6</b>
OPEN-3*n VLL	SCSI disk	HITACHI	OPEN-3*n-CVS	<b>Note 4</b>	512	<b>Note 5</b>	15	96	<b>Note 6</b>
OPEN-9*n VLL	SCSI disk	HITACHI	OPEN-9*n- CVS	<b>Note 4</b>	512	<b>Note 5</b>	15	96	<b>Note 6</b>
3390-3A	HRX otm/mto	HITACHI	3390-3A	5825520	512	3348	15	116	2844
3390-3B	HRXmto	HITACHI	3390-3B	5822040	512	3346	15	116	2842
3390-3C	HRXotm	HITACHI	OP-C-3390-3C	5825520	512	3348	15	116	2844

**Table 1.1 9900V Device Specifications for Windows® 2000 Operations (continued)**

Device Type (Note 1)	Category (Note 2)	Vendor Name	Product Name	# of Blocks (512-byte blk)	Sector Size (bytes)	# of Data Cylinders	# of Heads	# of Sectors per Track	Capacity MB (Note 3)
HRX OPEN-3	OPEN-x- HRXoto	HITACHI	OPEN-3	4806720	512	3338	15	96	2347
3390-3A VLL	HRX otm/mto	HITACHI	3390-3A- CVS	Note 4	512	Note 5	15	116	Note 6
3390-3B VLL	HRXmto	HITACHI	3390-3B- CVS	Note 4	512	Note 5	15	116	Note 6
3390-3C VLL	HRXotm	HITACHI	OP-C-3390-3C- CVS	Note 4	512	Note 5	15	116	Note 6
HRX OPEN-3 VLL	OPEN-x- HRXoto	HITACHI	OPEN-3- CVS	Note 4	512	Note 5	15	96	Note 6

**Note 1:** The availability of a specific 9900V device type depends on the level of microcode installed on the 9900V subsystem.

**Note 2:** The category of a device (SCSI disk or HRX) determines its volume usage. Table 1.2 shows the volume usage for SCSI disk devices and HRX devices. The SCSI disk devices (OPEN-x, OPEN VLL, LUSE, VLL LUSE) require partitions and file systems for Windows® 2000 operations. The HRX devices (3390-3A/B/C, OPEN-3-HRXoto) must be installed as raw devices and can only accessed using HRX. Do not create a partition or file system on any device used for HRX operations. Do not write a signature on an HRX device unless used in an MSCS environment.

**Note on the term “SCSI disk”:** The 9900V logical devices are defined to the host as SCSI disk devices, even though the interface is fibre-channel.

**Table 1.2 Volume Usage for Device Categories**

Category	Device Type	Volume Usage
SCSI Disk	OPEN-x, OPEN- x VLL, OPEN- x *n LUSE, OPEN-3*n VLL LUSE	File System
HRX	3390-3A/B/C 3390-3A/B/C VLL OPEN-3 for OPEN- x -HRXoto, OPEN-3 VLL for OPEN- x -HRXoto	Raw Device

**Note 3:** The device capacity can sometimes be changed by the BIOS or host adapter board. Also, different capacities may be due to variations such as 1 MB = 1000<sup>2</sup> or 1024<sup>2</sup> bytes.

**Note 4:** The number of blocks for a VLL volume is calculated as follows:

$$\text{\# of blocks} = (\text{\# of data cylinders}) \times (\text{\# of heads}) \times (\text{\# of sectors per track})$$

Example: For an OPEN-3 VLL volume with capacity = 37 MB:

$$\text{\# of blocks} = (53 \text{ cylinders-see note 3}) \times (15 \text{ heads}) \times (96 \text{ sectors per track}) = 76320$$

**Note 5:** The number of data cylinders for a VLL volume is calculated as follows:

( $\uparrow$ ... $\uparrow$  means that the value should be rounded up to the next integer)

- The number of data cylinders for an OPEN-x VLL volume =  
**# of cylinders =  $\uparrow$  (capacity (MB))  $\times$  1024/720  $\uparrow$**   
Example: For an OPEN-3 VLL volume with capacity = 37 MB:  
**# of cylinders =  $\uparrow$ 37  $\times$  1024/720 $\uparrow$  =  $\uparrow$ 52.62 $\uparrow$  (rounded up to next integer) = 53 cylinders**
- The number of data cylinders for a VLL LUSE volume =  
**# of cylinders =  $\uparrow$  (capacity (MB))  $\times$  1024/720  $\uparrow$   $\times$  n**  
Example: For an OPEN-3 VLL LUSE volume with capacity = 37 MB and n = 4  
**# of cylinders =  $\uparrow$ 37  $\times$  1024/720 $\uparrow$   $\times$  4 =  $\uparrow$ 52.62 $\uparrow$   $\times$  4 = 53  $\times$  4 = 212**
- The number of data cylinders for a 3390-3A/C VLL volume =  
**# of cylinders = (number of cylinders) + 9**
- The number of data cylinders for a 3390-3B VLL volume =  
**# of cylinders = (number of cylinders) + 7**

**Note 6:** The size of an OPEN-3/9/K/8 VLL volume is specified by capacity in MB, not by number of cylinders. The user specifies the volume size.

# Chapter 2 Preparing for New Device Configuration

## 2.1 Configuration Requirements

The requirements for 9900V Series (9900V) Windows® 2000 configuration are:

- Hitachi Lightning 9900™ V subsystem, all-open or multiplatform configuration.

- The 9900V LUN Manager software is used to define the fibre channel ports and configure the fibre-channel (FC) ports. If the remote LUN Manager feature is not installed, the Hitachi Data Systems representative can configure the LUN mapping and FC ports using the 9900V service processor (SVP). For information on LUN configuration services, please contact your Hitachi Data Systems account team.

**Note:** The availability of 9900V features and devices (e.g., OPEN VLL, 3390-3C) depends on the level of microcode installed on the 9900V subsystem.

- Windows® 2000 server/workstation. Please refer to the Microsoft® user documentation for PC server hardware requirements.
- Fibre-channel adapters. Make sure to install all utilities, tools, and drivers that come with the adapter(s). For information on driver requirements for the adapters, please refer to the user documentation for the adapter or contact the vendor.
  - The 9900V subsystem supports full-speed (2 Gbps) fibre-channel interface, including shortwave non-OFC (open fibre control) optical interface, and multimode optical cables with LC connectors and 1 MB/s fibre-channel interface, including shortwave non-OFC (open fibre control) optical interface, and multiple optical cables with SC connectors. Do not connect any OFC-type fibre-channel interface to the 9900V subsystem. For information on which FC adapters (FCAs), optical cables, hubs, and fabric switches are supported, please contact your Hitachi Data Systems account team or the Hitachi Data Systems Support Center (see section 5.2). For other information on supported fibre-channel adapters and driver requirements, please refer to the user documentation for the adapter or contact the vendor.
- Windows® 2000 Server or Windows® 2000 Professional operating system.

**Important:** Please contact Microsoft® to make sure that the most current OS patches are installed.

**Note:** Hitachi Data Systems plans to support future releases of the Windows® 2000 operating system. This document will be updated as needed to cover version-specific information. For further information on Windows® 2000 version support, please contact your Hitachi Data Systems account team.

## 2.2 Installing the 9900V Subsystem

The 9900V subsystem comes with all hardware and cabling required for installation. Installation of the 9900V subsystem involves the following activities:

1. **Hardware installation.** The Hitachi Data Systems representative performs this activity, which includes:

- Assembling all hardware and cabling.
- Loading the latest microcode and SVP updates for full fibre-channel support.
- Installing and formatting the logical devices (LDEVs) using the SVP. Make sure to get the desired LDEV configuration information from the user, including the desired number of OPEN-x, LUSE, VLL, VLL LUSE, and multiplatform (HRX) devices.

**Note:** The 9900V subsystem supports up to 256 devices per fibre-channel port, but the 9900V subsystem supports up to 32 LUNs for Windows® 2000. Therefore, Windows® 2000 has a current limit of 32 devices per FC port.

**Note:** Although the 9900V subsystem supports up to 256 LUs per port, connectivity with Windows® 2000 systems is limited to either 8 or 32 LUs per port, depending on the driver version of the FC adapter.

- Installing the fibre-channel adapters and cabling:

**Fibre:** The total fibre cable length attached to each fibre-channel adapter must not exceed 500 meters (1,640 feet). Do not install/de-install fibre-channel cabling while Windows® 2000 is active. This can cause the system to hang. Always confirm that Windows® 2000 is shut down before connecting/disconnecting the fibre cable.

**9900V FC Port:** The fibre topology parameters for each 9900V fibre port depend on the type of device to which the 9900V port is connected. Determine the topology parameters supported by the device, and set your topology accordingly (see section 2.3.4). The type of 9900V port is also important.

**Note:** The Hitachi Data Systems representative must use the 9900V Maintenance Manual during all installation activities. Follow all precautions and procedures in the maintenance manual, and always check all specifications to ensure proper installation and configuration.

2. **LUN Manager installation.** The user or Hitachi Data Systems representative can perform this activity. You will use the LUN Manager software to configure the 9900V fibre channel ports. For instructions on installing the LUN Manager software, please refer to the *Hitachi Freedom Storage™ Lightning 9900™ V Series Remote Console - Storage Navigator User's Guide (MK-92RD101)* and the *Hitachi Freedom Storage™ Lightning 9900™ V Series LUN Manager User's Guide (MK-92RD105)* respectively.

**Note:** If the remote LUN Manager feature is not installed, the Hitachi Data Systems representative can define the fibre channel ports for you using the SVP of the subsystem. Please contact your Hitachi Data Systems account team for further information on LUN configuration services.



## 2.3 Preparing to Connect the 9900V Subsystem

Before the 9900V is connected to your Win2000 system, you must perform the following tasks:

- Set the host mode for the 9900V fiber channel ports (see section 2.3.1), and
- Configure the 9900V fibre-channel ports (see section 2.3.2).

### 2.3.1 Setting the Host Mode for the 9900V Ports

The 9900V ports have special modes which must be set for the connected operating system. Use the LUN Manager software to set the host mode for each port (see Figure 2.1). The required host mode setting for 9900V Windows® 2000 operations is **0C**. The host mode setting 0C is required to support MSCS failover and to recognize more than 8 LUs. Please note that it is not acceptable to use any other host mode setting except 0C.

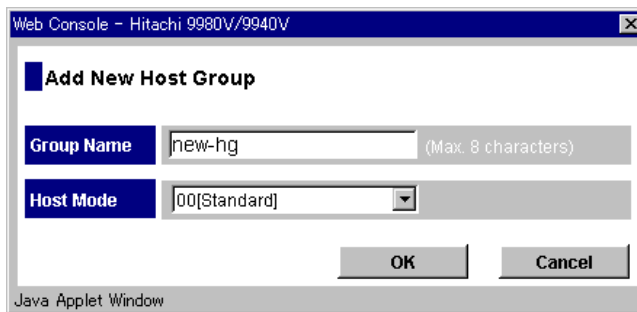


Figure 2.1 The Add New Host Group Panel

## 2.3.2 Configuring the 9900V Fibre-Channel Ports

You also need to configure the 9900V fibre-channel ports to define the fibre parameters (see Table 2.1) and port addresses (see Table 2.2). You will use the LUN Manager software to configure the 9900V fibre-channel ports. For instructions on using LUN Manager, please refer to the *Hitachi Freedom Storage™ Lightning 9900™ V Series LUN Manager User's Guide* (MK-92RD105).

**Fibre topology.** Figure 2.2 shows the Port Mode Panel, which shows the port name, port type, host speed, port address (Loop ID), fabric switch (on or off) and topology (type of connection). Table 2.1 explains the fibre-parameter settings on this panel. You will select the appropriate settings for each 9900V fibre-channel port based on the device to which the port is connected. Determine the topology parameters supported by the device, and set your topology accordingly. The type of 9900V port is also important. **Note:** If you plan to connect different types of servers to the 9900V via the same fabric switch, you must use the **zoning** function of the fabric switch.

**Port address.** In fabric environments, the port addresses are assigned automatically by fabric switch port number and are not controlled by the 9900V port settings. In arbitrated loop environments, the port addresses are set by entering an AL-PA (arbitrated-loop physical address, or loop ID). Table 2.2 shows the available 9900V AL-PA values ranging from 01 to EF. Fibre-channel protocol uses the AL-PAs to communicate on the fibre-channel link, but the software driver of the platform host adapter translates the AL-PA value assigned to the 9900V port to a SCSI TID. See Appendix B for a description of the AL-PA-to-TID translation. **Note on loop ID conflict:** The AL-PAs should be unique for each device on the loop to avoid conflicts.

Use the LUN Manager software to define the topology parameters (see Figure 2.2 and Table 2.1) and port ID (see Table 2.2) for each 9900V FC port. For detailed instructions, please refer to the LUN Manager chapter of the *Hitachi Lightning 9900™ V Series LUN Manager/SANTinel User's Guide* (MK-92RD105). When you are done configuring the FC ports, you can exit the LUN Manager software.

**Note:** For the latest fibre topology information, please contact your Hitachi Data Systems account team.

**Note:** The 9900V subsystem supports up to 256 devices per fibre-channel port, but the 9900V subsystem up to 32 LUNs for Windows® 2000. Therefore, Windows® 2000 has a current limit of 32 devices per FC port.

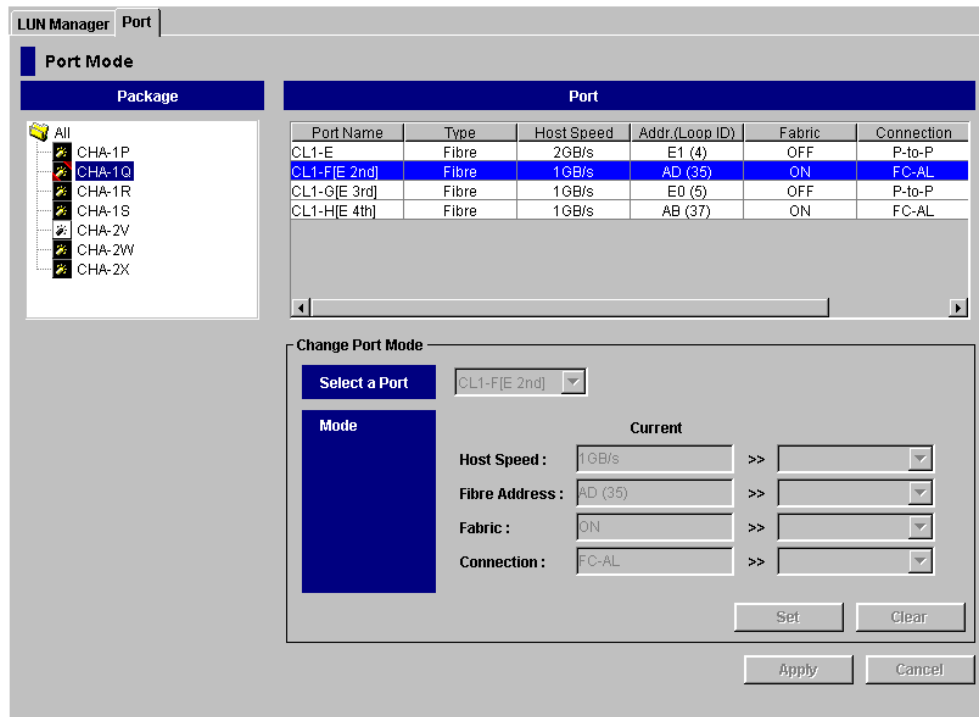


Figure 2.2 Port Mode Panel (Port Tab)

Table 2.1 Fibre Topology Settings on the 9900V Remote Console

Fabric Parameter	Connection Parameter	Provides:
ON	FC-AL	FL-port (Fabric port).
ON	Point-to-Point	F-port (Fabric port).
OFF	FC-AL	NL-port (Private arbitrated loop).
OFF	Point-to-Point	Not supported.

**Note:** Please contact Hitachi Data Systems for detailed information about port topology configurations supported by each host bus adapter/switch combination. Not all types of switches support F-port connection.

**Table 2.2 Available AL-PA Values**

EF	CD	B2	98	72	55	3A	25
E8	CC	B1	97	71	54	39	23
E4	CB	AE	90	6E	53	36	1F
E2	CA	AD	8F	6D	52	35	1E
E1	C9	AC	88	6C	51	34	1D
E0	C7	AB	84	6B	4E	33	1B
DC	C6	AA	82	6A	4D	32	18
DA	C5	A9	81	69	4C	31	17
D9	C3	A7	80	67	4B	2E	10
D6	BC	A6	7C	66	4A	2D	0F
D5	BA	A5	7A	65	49	2C	08
D4	B9	A3	79	63	47	2B	04
D3	B6	9F	76	5C	46	2A	02
D2	B5	9E	75	5A	45	29	01
D1	B4	9D	74	59	43	27	
CE	B3	9B	73	56	3C	26	

## 2.4 Connecting the 9900V Subsystem and Recording the Disk Numbers

After you have configured the host modes and fibre-channel ports for the 9900V, you are ready to connect the 9900V subsystem to the Windows® 2000 system. The 9900V subsystem comes with all hardware and cabling required for connection to the host system(s).

To connect the 9900V subsystem to the Win2000 system:

1. **Verify subsystem installation.** The Hitachi Data Systems representative verifies that the status of the fibre channel ports and LDEVs is NORMAL. The Hitachi Data Systems representative should also check the fibre channel ports and fibre device parameters to make sure that all 9900V devices are unique for each host system.
2. **Shut down and power off the Win2000 system.** The user should perform this activity. You must shut down and power off the Win2000 system before connecting the 9900V. To shut down and power off the Win2000 system:
  - a) Shut down the Win2000 operating system as usual.
  - b) Power off all peripheral devices except for the 9900V subsystem.
  - c) Power off the Win2000 system. You are now ready to connect the 9900V subsystem.
3. **Connect the 9900V to the Win2000 system.** The Hitachi Data Systems representative installs the fibre cables between the 9900V and the Win2000 system. **Note:** The Hitachi Data Systems representative must use the 9900V Maintenance Manual during all installation activities. Follow all precautions and procedures, and check all specifications to ensure proper installation and configuration.
4. **LUN security.** If the 9900V is connected to fabric, you must control access to the 9900V LUs before you power on the Win2000 system to prevent failures on other systems connected to the same fabric. You can use any of several methods for ensuring that the Win2000 system sees only the LUs it owns (e.g., LUN Security, set FC adapters to not automap LUNs, switch zoning). For further information on using the 9900V LUN Security LUN Manager software, please refer to the *Hitachi Lightning 9900™ V Series LUN Manager/SANTinelUser's Guide* (MK-92RD105).
5. **Power on and start booting the Win2000 system.** The user should perform this activity. To power on the Win2000 system after connecting the 9900V:
  - a) Power on the Win2000 system display.
  - b) Power on all peripheral devices. The 9900V should already be on. The host modes and fibre channel ports should already be configured (see sections 2.3.1-2.3.2). If not, the Win2000 system may need to be restarted in order to recognize the new devices.
  - c) Confirm the ready status of all peripheral devices, including the 9900V.
  - d) Power on the Win2000 system connected to the 9900V.

6. **Record the disk numbers.** When the adapter connected to the 9900V starts displaying the new devices (see Figure 2.3), pause the screen and record the disk number for each new device on your SCSI Device worksheet (see Table 2.3). You will need the disk numbers for the devices when you write signatures on the devices (see section 3.1).

**Note:** You will also need the disk numbers for the HRX devices when you create the HRX volume definition file (**datasetmount.dat**). For example, if disk number 3 is a 3390-3B HRX device, the entry for this volume in the HRX volume definition file is:

```
\\.\PHYSICALDRIVE3 XXXXXX 3390-3B (XXXXXX is the VOLSER)
```

7. **Reboot.** After recording the disk numbers, reboot the Win2000 system and get ready to access the fibre-channel adapter utility while the system is booting up.

```
Adaptec AHA-2944 Ultra/Ultra W Bios v1.32.1
© 1997 Adaptec, Inc. All Rights Reserved
<<<Press <CTRL><A> for SCSISelect™ Utility>>>

SCSI ID:0
  LUN: 0 HITACHI OPEN-9          Hard Disk 0      ← Disk numbers may not start at 0.
  LUN: 1 HITACHI OPEN-9          Hard Disk 1
  LUN: 2 HITACHI OPEN-3          Hard Disk 2
  LUN: 3 HITACHI OPEN-3          Hard Disk 3
  LUN: 4 HITACHI OPEN-3          Hard Disk 4
  LUN: 5 HITACHI OPEN-9          Hard Disk 5
  LUN: 6 HITACHI 3390-3A         Hard Disk 6
  LUN: 7 HITACHI 3390-3A         Hard Disk 7
SCSI ID:1
  LUN: 0 HITACHI OPEN-3          Hard Disk 8
  LUN: 1 HITACHI OPEN-3          Hard Disk 9
  LUN: 2 HITACHI OPEN-3          Hard Disk 10
:
:
```

**Figure 2.3** Recording the Disk Numbers for the New Devices

**Note:** The Win2000 system assigns the disk numbers sequentially starting with the local disks and then by adapter, and by TID/LUN. If the 9900V is attached to the first adapter (displayed first during system start-up), the disk numbers for the new devices will start at 1 (the local disk is 0). If the 9900V is not attached to the first adapter, the disk numbers for the new devices will start at the next available disk number. For example, if 40 disks are attached to the first adapter (disks 1-40) and the 9900V is attached to the second adapter, the disk numbers for the 9900V will start at 41.

**Note:** When disk devices are added to or removed from the Win2000 system, the disk numbers are reassigned automatically. For the HRX devices, make sure to update your HRX volume definition file (**datasetmount.dat**) with the new disk numbers.

**Table 2.3 Sample SCSI Device Information Worksheet**

LDEV (CU:LDEV) (CU:LDEV)	LU Type	VLL (✓)	Device Number	Bus Number	Path 1	Alternate Path(s)			
						TID:____ LUN:____	TID:____ LUN:____	TID:____ LUN:____	TID:____ LUN:____
0:00					TID:____ LUN:____	TID:____ LUN:____	TID:____ LUN:____	TID:____ LUN:____	
0:01					TID:____ LUN:____	TID:____ LUN:____	TID:____ LUN:____	TID:____ LUN:____	
0:02					TID:____ LUN:____	TID:____ LUN:____	TID:____ LUN:____	TID:____ LUN:____	
0:03					TID:____ LUN:____	TID:____ LUN:____	TID:____ LUN:____	TID:____ LUN:____	
0:04					TID:____ LUN:____	TID:____ LUN:____	TID:____ LUN:____	TID:____ LUN:____	
0:05					TID:____ LUN:____	TID:____ LUN:____	TID:____ LUN:____	TID:____ LUN:____	
0:06					TID:____ LUN:____	TID:____ LUN:____	TID:____ LUN:____	TID:____ LUN:____	
0:07					TID:____ LUN:____	TID:____ LUN:____	TID:____ LUN:____	TID:____ LUN:____	
0:08					TID:____ LUN:____	TID:____ LUN:____	TID:____ LUN:____	TID:____ LUN:____	
0:09					TID:____ LUN:____	TID:____ LUN:____	TID:____ LUN:____	TID:____ LUN:____	
0:0a					TID:____ LUN:____	TID:____ LUN:____	TID:____ LUN:____	TID:____ LUN:____	
0:0b					TID:____ LUN:____	TID:____ LUN:____	TID:____ LUN:____	TID:____ LUN:____	
0:0c					TID:____ LUN:____	TID:____ LUN:____	TID:____ LUN:____	TID:____ LUN:____	
0:0d					TID:____ LUN:____	TID:____ LUN:____	TID:____ LUN:____	TID:____ LUN:____	
0:0e					TID:____ LUN:____	TID:____ LUN:____	TID:____ LUN:____	TID:____ LUN:____	
0:0f					TID:____ LUN:____	TID:____ LUN:____	TID:____ LUN:____	TID:____ LUN:____	
0:10					TID:____ LUN:____	TID:____ LUN:____	TID:____ LUN:____	TID:____ LUN:____	
and so on...									

## 2.5 Configuring the Host Fibre-Channel Adapters

After connecting the 9900V subsystem and recording the disk numbers for the new devices, you are ready to configure the fibre-channel adapter(s) connected to the 9900V. The HBA setup utility allows you to configure the adapter settings while the system is booting up. The host bus adapters have many configuration options. This section provides the following minimum requirements for configuring the 9900V subsystem.

- The disk I/O timeout value (TOV) requirement for the 9900V is 60 seconds (0x3c hex).
- The queue depth requirements for the 9900V devices are specified in Table 2.4.
- The BIOS may need to be disabled to prevent the system from trying to boot from the 9900V. If you want to configure the Win2K boot disk on the 9900V subsystem, see section 2.5.1 and Appendix C.

**Note:** To configure the Windows® 2000 boot disk on the 9900V subsystem, please see section 2.5.1.

- In addition to the disk I/O TOV, queue depth, and BIOS, several other parameters (e.g., FC fabric) may also need to be set. Please refer to the user documentation, which came with your HBA to determine whether other options are required to meet your operational requirements.

**Note:** Make sure to use the same settings and device parameters for all 9900V devices.

The following sample instructions that apply to the QLogic FC adapter. For other adapters, please refer to the user documentation for the adapter. Table 2.5 shows the FC adapter configuration requirements for Windows® 2000 boot disk.

**Note:** If your HBA does not have a setup utility, or if your HBA setup utility does not provide access to the required parameters, use the Windows® 2000 Registry Editor to set the required parameters. Please ask your Hitachi Data Systems representative for assistance in setting these parameters. See section 2.6 for instructions on configuring the adapter settings using the Registry Editor.

**Table 2.4 Execution Throttle (Queue Depth) Requirements for the 9900V Devices**

Parameter	Required Value
Queue depth per LUN	queue-depth ≤ 32 per LUN
Queue depth per port (MAXTAGS)	queue-depth ≤ 256 per port

**Note:** You can adjust the queue depth for the 9900V devices later as needed (within the specified range) to optimize the I/O performance of the 9900V devices.



**Table 2.5 Fibre Adapter Configuration Requirements: Boot Disk**

Windows® 2000 Boot Disk	BIOS Settings	
	QLogic QLA2100F/2200F	Emulex LightPulse
No	Host Adapter BIOS = Disabled	default
Yes	Host Adapter BIOS = Enabled	Host Adapter BIOS = Enabled

To configure a QLA2100F/2200F fibre-channel adapter connected to the 9900V:

1. While the Win2000 system is booting up, launch the HBA setup utility as follows: when the message **Press <Alt-Q> to Run QLogic Fast! Utility** appears, press **Alt-Q**.
2. Select the QLogic adapter to configure.
3. Go to **<Configuration Settings>**, select **<Host Adapter Settings>**, and then verify the following settings:
  - Host Adapter BIOS: Disabled
  - Frame Size: 2048
  - Execution Throttle: See Table 2.4 (*execution throttle = queue depth*)
4. Select **<Adapter Hard ID Settings>**, and then verify the following settings:
  - Adapter Hard ID: Enabled
  - Hard ID: Less than all 9900V fibre port addresses
5. To configure an MSCS environment, Go to **<Configuration Settings>**, select **<Advanced Adapter Settings>**, and then verify the following settings:
  - >4Gbyte Addressing: Enabled
  - Enable LIP Reset: Yes
  - Enable Target Reset: Yes
6. Verify all other required settings for your operational environment. For example, the QLogic adapter defaults to eight LUNs per target, so you may need to change that setting. Refer to the user documentation for the adapter as needed.
7. Repeat steps (2)-(5) for each QLogic FC adapter connected to the 9900V subsystem. When you are finished configuring QLogic adapters, exit the HBA setup utility.

### **WARNING for Emulex FC adapter with Intel Pentium Pro PCI chipsets**

On Windows® 2000 systems using the Intel Pentium Pro PCI chipsets, the Emulex adapter is not recognized by the secondary power-control interface (PCI) bus of a dual peer-bus system. This problem is caused by the Microsoft® HAL improperly assigning resources to some PCI devices. Microsoft® provides a workaround for this problem which causes the HAL to use the BIOS-assigned defaults rather than reassign PCI resources. This workaround involves editing the Win2000 system's **boot.ini** file.

**Note:** You may need to remove the read-only file attribute in order to edit the **boot.ini** file. You can use the Windows® **File-Properties** panel or the DOS **attrib** command (e.g., `attrib -r -h -s c:\boot.ini`) to remove the read-only file attribute. Please ask your Hitachi Data Systems representative for assistance.

Edit the **boot.ini** file as follows to enable both PCI buses to recognize the Emulex FC adapter:

1. Use a text editor (e.g., Notepad) to open the **boot.ini** file.
2. Add the **/PCILOCK** option to the system boot entry, and then save your changes.
3. Close the **boot.ini** file. You must reboot the system for these changes to take effect.

## 2.5.1 Configuring the Windows® 2000 Boot Disk on the 9900V Subsystem

To configure the Windows® 2000 boot disk on the 9900V subsystem, your system must have the following:

- Fibre-channel topology must be FC-AL (private loop technology).

Boot disk through fabric switch is not supported.

**Note:** It is best to configure the Windows® 2000 boot disk when host activity is lowest.

Emulex LightPulse HBA for the 9900V subsystem

- Emulex LightPulse HBA firmware version 3.20x4 or later. The firmware must contain boot BIOS version 1.51a1 or later.
- The **host bus adapter** must be Emulex LP8000

**Note:** To download the firmware and boot BIOS, see <http://www.emulex.com>.

- Registry option "LinkTimeOut" must be more than '180'.

QLogic QLA2100F or QLA2200F HBA for the 9900V subsystem

- QLogic QLA2100F HBA boot BIOS version 1.37 or later.
- QLogic QLA2200F HBA boot BIOS version 1.61 or later.

**Note:** To download the boot BIOS, see <http://www.qlogic.com/>.

- "Loop Reset Delay" in <Host Adapter Settings> must be more than '20" by QLogic Fast! Utility.

For further information on setting up the Windows® 2000 system to boot from the 9900V, please contact your Hitachi Data Systems representative.

## 2.6 Verifying the Disk and Device Parameters

After you have configured the fibre channel ports during boot-up, you need to verify the required disk and device parameters using the Windows® 2000 Registry. You must verify the disk I/O timeout value (TOV) and the queue depth, and you should also verify other required parameters such as FC fabric support and link down timeout.

### 2.6.1 Verifying the Disk I/O Timeout Value (TOV)

The disk I/O TOV parameter, which applies to all SCSI disk devices attached to the Win2000 system, must be set to 60 seconds. The default setting is hexadecimal 0x3c, which is decimal 60. **Note:** With some HBAs (such as Emulex), this value is set by manually editing the Registry entry. For information about specific HBAs, contact the manufacturer.

**CAUTION:** The following procedure utilizes the Windows® 2000 Registry Editor and is intended for the system administrator with the assistance of your Hitachi Data Systems representative. **Use the Registry Editor with extreme caution.** Always use **regedt32** instead of **regedit**. Do not make any changes to the system registry other than those specified below. For instructions on editing the registry, please refer to the online help for the Registry Editor. When specifying multiple parameters, separate each parameter by a semi-colon and a space. If you have questions or concerns, please contact the Hitachi Data Systems Support Center before beginning this procedure.

Verify the disk I/O TOV using the Registry Editor as follows (see Figure 2.4):

1. Start the Windows® 2000 Registry Editor: from the **Start** menu click on **Run** and enter **regedt32**, or double-click on **regedt32** in the Windows® 2000 system directory.
2. Display the disk parameters as follows: go to **HKEY\_LOCAL\_MACHINE** → **SYSTEM** → **CurrentControlSet** → **Services** → **Disk** (see Figure 2.4).
3. Make sure that the **TimeOutValue** disk parameter is set to 60 seconds (0x3c).
  - If the **TimeOutValue** is not set to 60 seconds, reboot the Win2000 system, and set the TOV to 60 seconds using one of the HBA setup utilities. **Note:** With some HBAs (such as Emulex), this value is set by manually editing the Registry entry. If you do not want to reboot, **carefully** edit the **TimeOutValue** entry using the Win2000 Registry Editor (see **CAUTION** above). For instructions on adding or modifying the **TimeOutValue**, refer to the online help for the Registry Editor.
4. Save your changes (if any), and exit the Registry Editor.

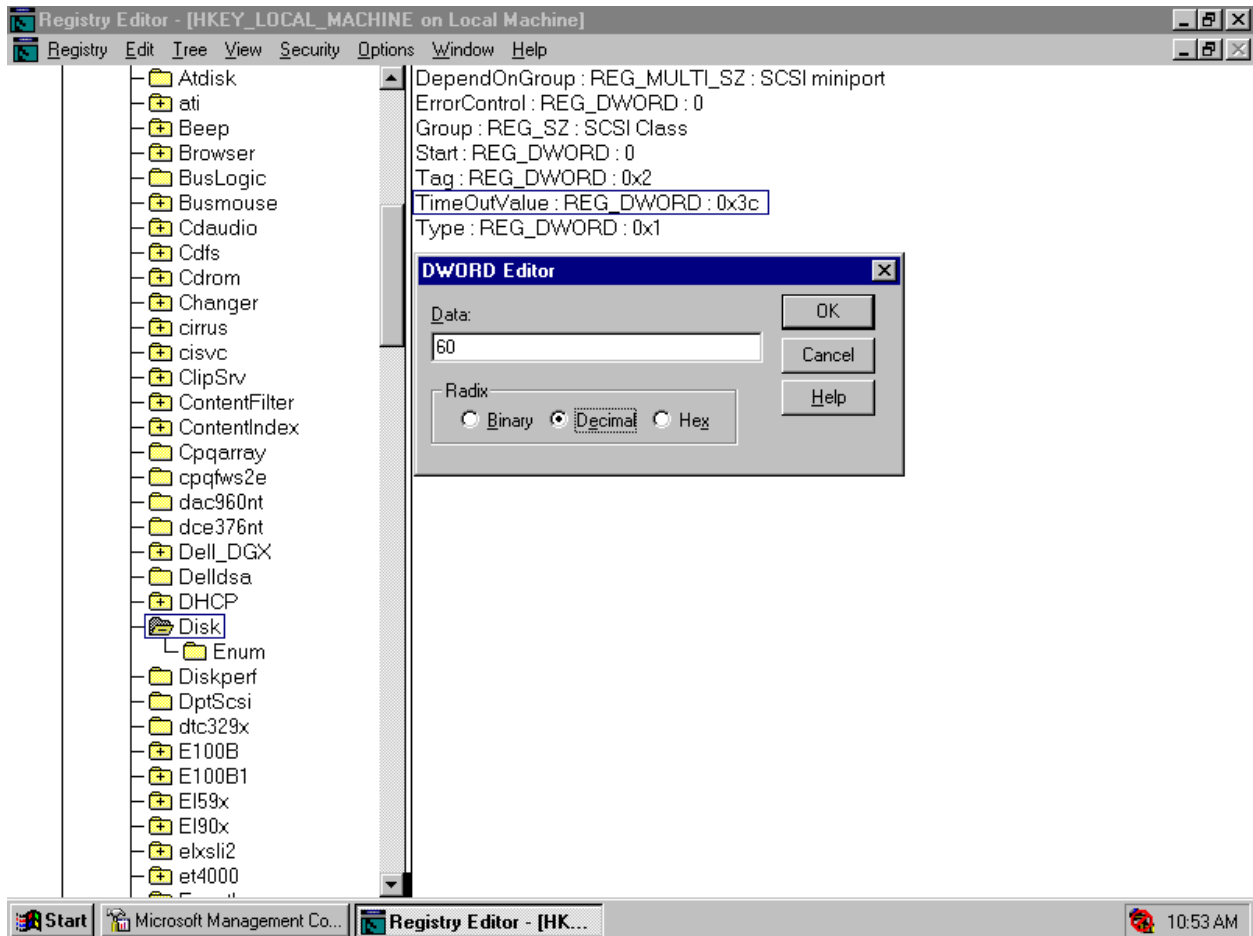


Figure 2.4 Verifying/Setting the Disk I/O TOV Using the Registry Editor

## 2.6.2 Verifying the Device Parameters

The queue depth parameter for the 9900V devices must be set as specified in Table 2.4 (refer to section 2.5). In addition to queue depth, you should also verify all other required settings for your operational environment (e.g., FC fabric support). You must also make sure that the device parameters are the same for all 9900V devices.

This section provides sample instructions for the Emulex and QLogic FC adapters. For other adapters, please refer to the user documentation for the adapter.

**CAUTION:** The following procedure utilizes the Windows® 2000 Registry Editor and is intended for the system administrator with the assistance of your Hitachi Data Systems representative. **Use the Registry Editor with extreme caution.** Always use **regedt32** instead of **regedit**. Do not make any changes to the system registry other than those specified below. For instructions on editing the registry, please refer to the online help for the Registry Editor. When specifying multiple parameters, separate each parameter by a semi-colon and a space. If you have questions or concerns, please contact the Hitachi Data Systems Support Center before beginning this procedure.

**NOTE:** You can also use Emulex utilities to set drive parameters. See <http://www.emulex.com>.

Verify the queue depth and other device parameters using the Registry Editor as follows:

1. Start the Windows® 2000 Registry Editor.
2. For each Emulex FC adapter:
  - a) For the SCSI Mini Port Driver, go to: **HKEY\_LOCAL\_MACHINE → SYSTEM → CurrentControlSet → Services → LPXNDS → Parameters → Device.**
  - b) Make sure that the **DriverParameter** device parameter has the following values:  
**QueueDepth=X;** (X meets the requirements in Table 2.4)  
**LinkTimeOut=180**  
**LipFFrecovery=1**  
**NodeTimeout=180**  
  
Make sure that the **DriverParameter** device parameter has the following values in MSCS and/or HDLM environment :  
**EmulexOption=0x20**  
**ResetTPRLO=1**
  - c) If the Emulex adapter (SCSI Mini Port Driver) is connected to a fabric switch, verify that the **DriverParameter** device parameter **Topology=1;RegFcpType=1 (for LP9002).**
  - d) Verify all other required settings for your operational environment. Refer to the user documentation for the adapter as needed.

For the SCSI Mini Port Driver:

- a) go to: **HKEY\_LOCAL\_MACHINE → SYSTEM → CurrentControlSet → Services → LPXNDS → Parameters → Device.**
- b) Make sure that the **DriverParameter** device parameter has the following values:  
**QueueDepth=X;** (X meets the requirements in Table 2.4)  
**LinkTimeOut=180**  
**LipFFrecovery=1**  
**NodeTimeout=180**

Make sure that the **DriverParameter** device parameter has the following values in an MSCS and/or HDLM environment:

**EmulexOption=0x20**

**ResetTPRLO=1**

- c) If the Emulex adapter (SCSI Mini Port Driver) is connected to a fabric switch, verify that the **DriverParameter** device parameter **Topology=1;RegFcpType=1 (for LP9002).**
- d) Verify all other required settings for your operational environment. Refer to the user documentation for the adapter as needed.

It is also possible to modify queue depth and other device parameters using the LightPulse™ utility to access the LightPulse™ Utility/NT panel.

- a) Go to Start → Find → Files and Folders.
- b) On the Find panel, enter **lputilnt.exe**. From the **Look in** list box, select the hard drive that contains the Emulex miniport driver.
- c) Select **Find Now** to locate the LightPulse™ utility. **Note:** If you cannot find it, contact Emulex technical support.
- d) Select **lputilnt.exe** from the **Find: Files named** list box, then press Enter. The LightPulse Utility/NT panel opens as shown in Figure 2.5. The installed adapter(s) is/are displayed on the left side of the panel. Verify that the installed adapter(s) is/are displayed.
- e) On the **LightPulse Utility** panel, select the **Driver Parameters** option from the **Category** list box and select the applied parameter. The Modify Driver Parameter panel opens to change the value of the parameter as shown in Figure 2.6.

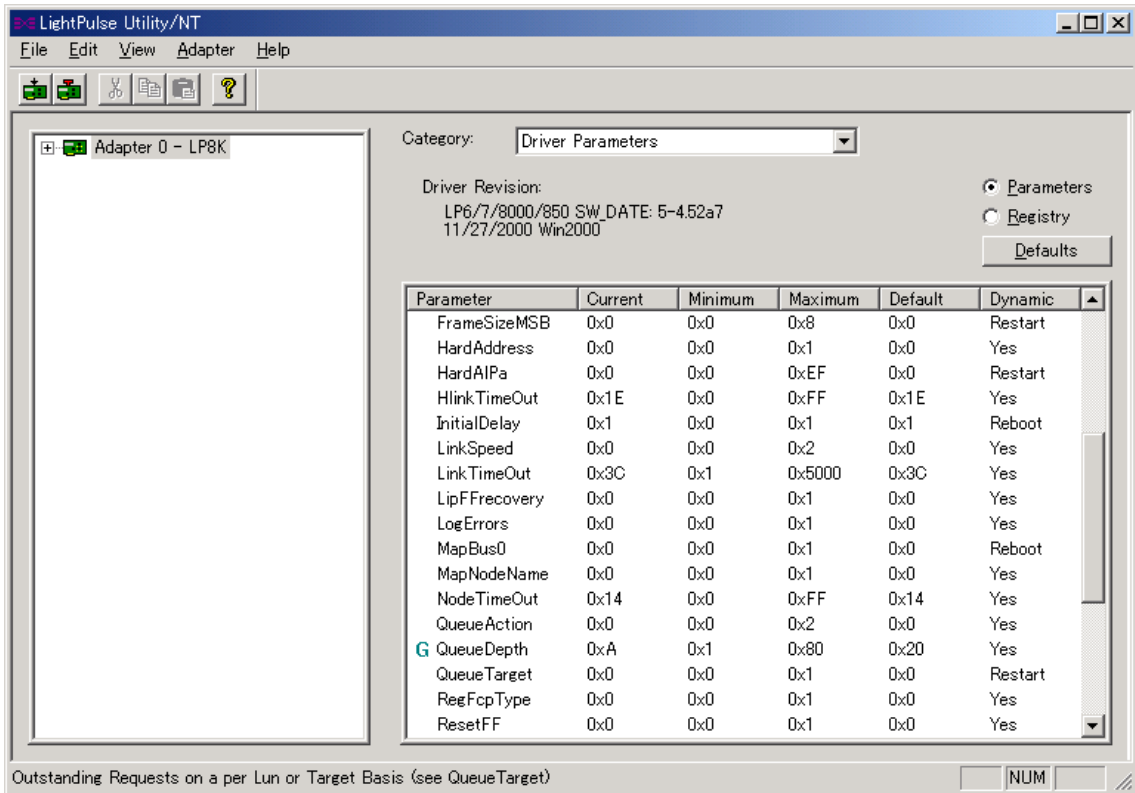


Figure 2.5 LightPulse Utility/NT Panel

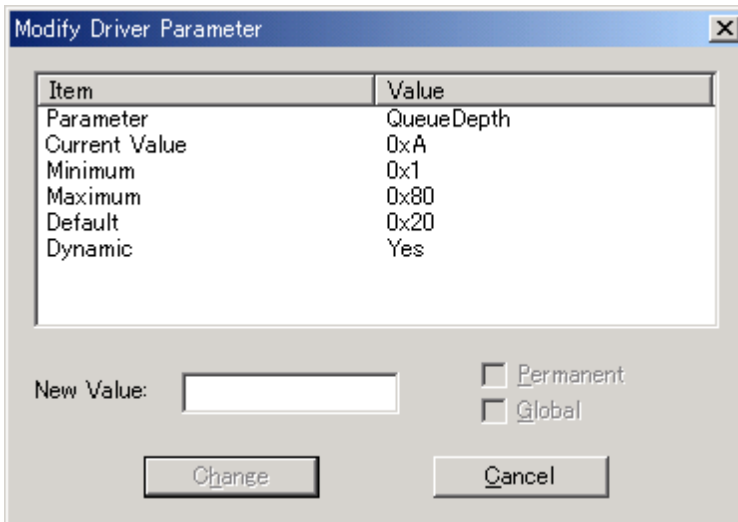


Figure 2.6 Modify Drive Parameter Panel



3. For each QLogic FC adapter:
  - a) Display the device parameters for the QLogic FC adapter as follows: go to **HKEY\_LOCAL\_MACHINE** → **SYSTEM** → **CurrentControlSet** → **Services** → **ql2100** (or **ql2200**) → **Parameters** → **Device**.
  - b) If connected to a fabric switch, add **FabricSupported=1** to the **DriverParameter**.
  - c) Verify all other required settings for your operational environment (e.g., support for more than eight LUNs per target ID). Refer to the user documentation for the adapter as needed.
4. If you need to change any adapter settings, reboot the Win2000 system, and use the HBA setup utility. If you do not want to reboot, edit the registry *carefully* (see **CAUTION** above) using the Registry Editor.
5. Save your changes (if any), and exit the Registry Editor.

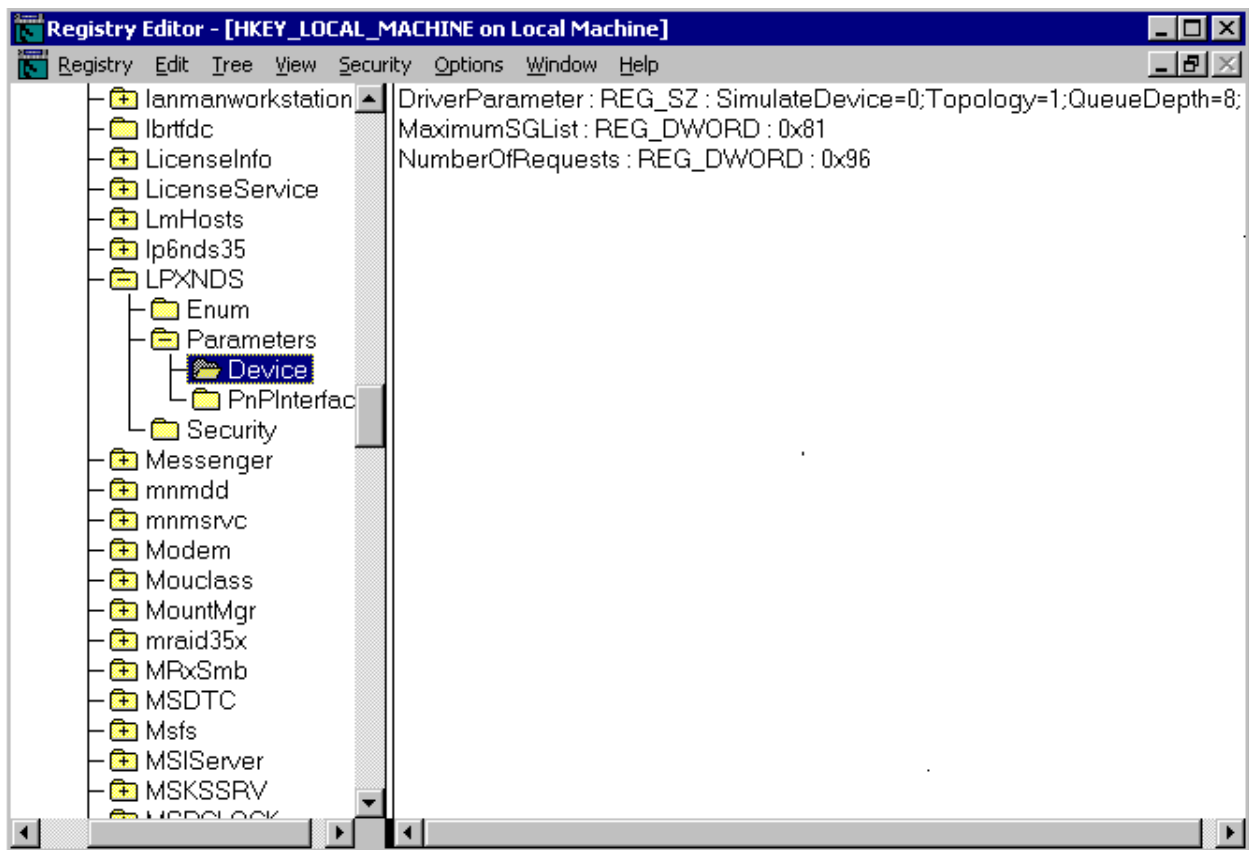


Figure 2.7 Verifying the Queue Depth (Emulex FC adapter shown)



## Chapter 3 Configuring the New Devices

After 9900V Series (9900V) installation has been completed and new device recognition has been verified, the new 9900V devices are ready to be configured for use. Configuration of the 9900V devices is performed by the user. The activities involved in configuring the 9900V devices are:

- Writing the signatures on the new devices (see section 3.1),
- Creating and formatting the partitions on the new devices (see section 3.2),
- Verifying system access to the new devices (see section 3.3), and
- Verifying auto-mount of the new devices (see section 3.4).

Do not create partitions on the HRX devices. If the HRX devices will be used in the Microsoft® Cluster Server (MSCS) environment, you must write a signature on each HRX device. If not, do not write a signature.

### 3.1 Writing the Signatures

The first step in configuring the new devices is to write a signature on each device using the Win2000 Disk Management. You must write a signature on each SCSI disk device to enable the Win2000 system to vary the device online. For MSCS environments, you must also write signatures on the HRX devices. The 32-bit signature identifies the disk to the Win2000 system. If the disk's TID and/or LUN is changed, or even if the disk is moved to a different controller, the Disk Management and Windows® 2000 fault-tolerant driver will continue to recognize it.

**Note:** The Win2000 system assigns the disk numbers sequentially starting with the local disks and then by adapter, and by TID/LUN. If the 9900V is attached to the first adapter (displayed first during system start-up), the disk numbers for the new devices will start at 1 (the local disk is 0). If the 9900V is not attached to the first adapter, the disk numbers for the new devices will start at the next available disk number. For example, if 40 disks are attached to the first adapter (disks 1-40) and the 9900V is attached to the second adapter, the disk numbers for the 9900V will start at 41.

To write the signatures on the new disk devices (see Figure 3.1):

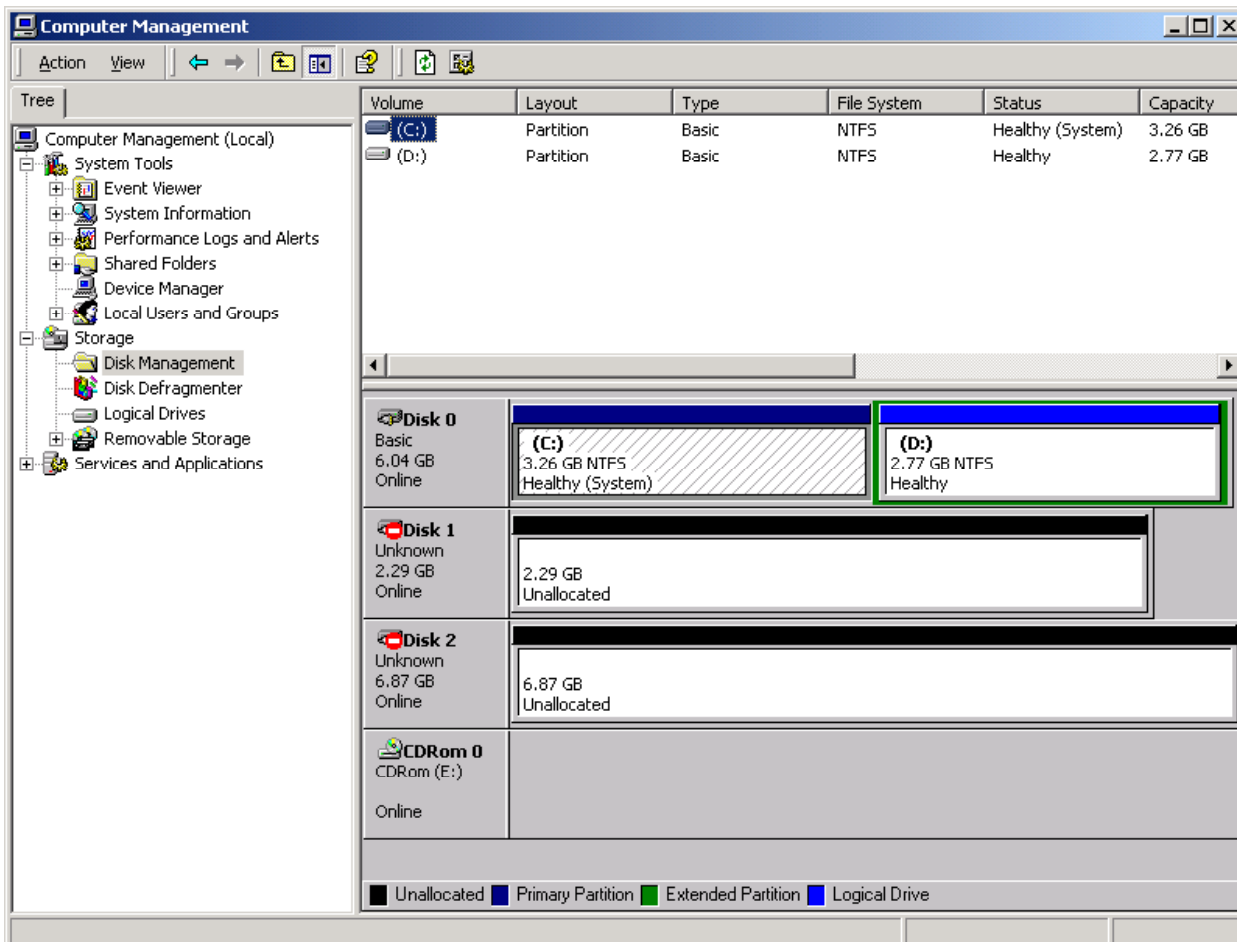
1. From the **Start-Programs** menu, select **Administrative Tools (Computer Management)**, and then select **Disk Management** to start the Disk Manager. Initialization takes a few seconds.
2. When the Disk Management notifies you that one or more disks have been added, select **OK** to allow the system configuration to be updated. **Note:** If you removed any disks, the Disk Management will also notify you at this time.
3. You will need to reboot your system after adding each new device (see Figure 3.2).

*Instructions continue on the next page.*

- The Disk Management now displays each new device by disk number and asks if you want to write a signature on the disk (see Figure 3.3). You may only write a signature once on each device. Refer to your completed SCSI Path Worksheet (see Table 2.3) to verify the device type for each disk number. For all SCSI disk devices, select **OK** to write a signature. For HRX devices without MSCS, select **No**. For HRX devices with MSCS, select **Yes** and observe this warning:

**WARNING:** After a signature has been written on an HRX device, there is no way to distinguish the HRX device from a SCSI disk device. The user must exercise extreme caution not to accidentally partition and format an HRX device. This will overwrite any data on the HRX device and also prevent the HRX software from accessing the device.

- After you have written a signature (or declined to write a signature) on each new device, the Disk Management main panel opens and displays the devices by disk number (see Figure 3.1). The total capacity and free space are displayed for each disk device with a signature. **Configuration information not available** indicates no signature. Do not exit the Disk Manager yet. You will create partitions on the new SCSI disk devices next.



**Note:** In this example, disk 0 is the local disk, disk 1 is an OPEN-9 device, disk 2 is an OPEN-3 device, disk 3 is a 3390-3B device, and disk 4 is a 3390-3A device. The entries in the HRX volume definition file (**datasetmount.dat**) for these HRX volumes are:

```

\\.\PHYSICALDRIVE3 'volser' 3390-3B
\\.\PHYSICALDRIVE4 'volser' 3390-3A      ('volser' is the mainframe volume serial number)

```

**Figure 3.1** Disk Management Panel Showing New Devices



Figure 3.2 Rebooting Your PC After Each New Device Is Added

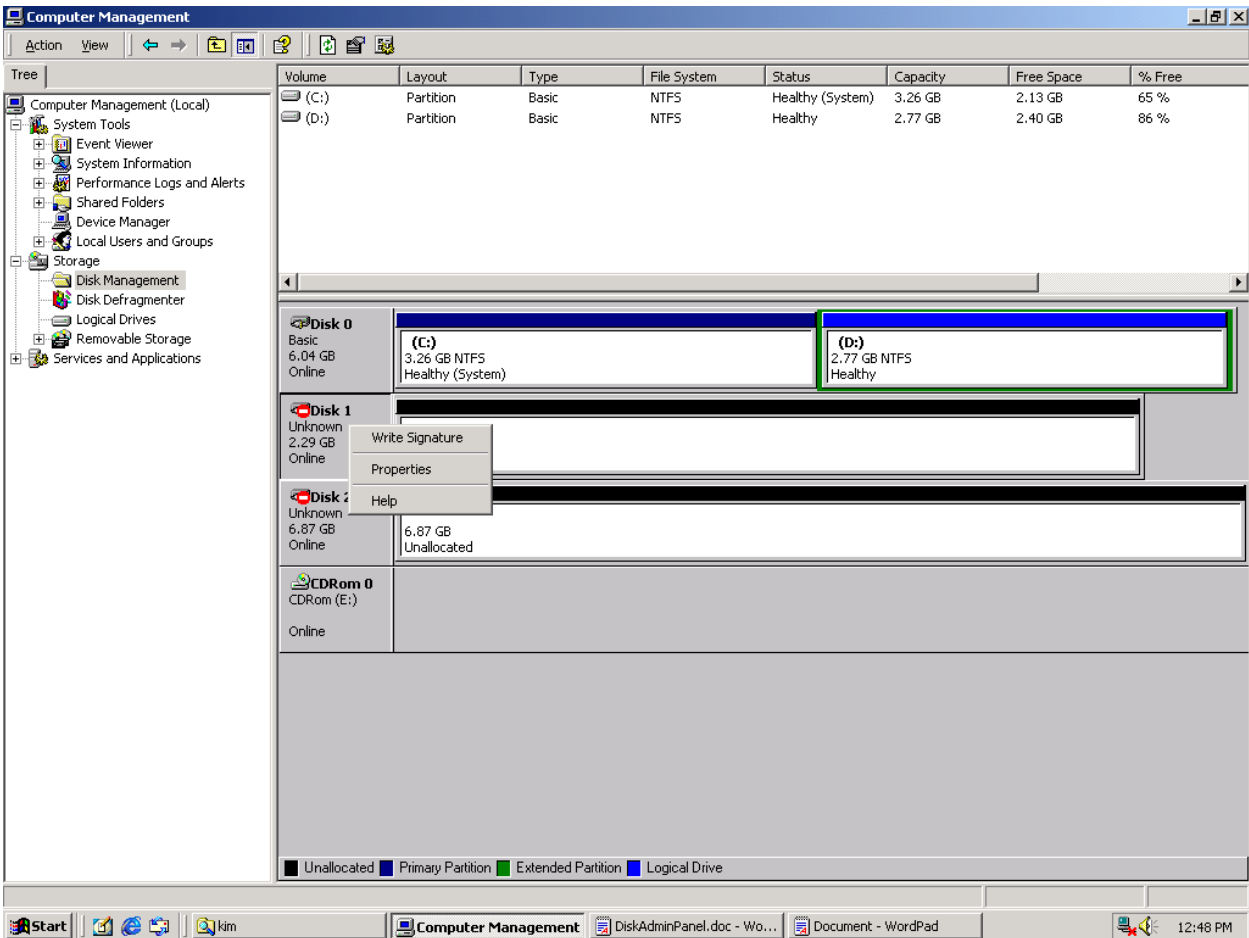


Figure 3.3 Writing the Signatures

## 3.2 Creating and Formatting the Partitions

After you have written the signatures on the new devices, you are ready to create and format the partitions on the new SCSI disk devices. Do not create partitions on the HRX devices. Use your completed SCSI Device Worksheet (refer to Table 2.3) as needed to verify disk numbers and device types.

Dynamic Disk is supported with no restrictions for the 9900V connected to the Windows® 2000 operating system. For more information, please refer to Microsoft's online help.

To create and format partitions on the new SCSI disk devices (see Figure 3.4-Figure 3.11):

1. On the Disk Management main panel, select the unallocated area for the SCSI disk you want to partition, and select the **Create Partition** menu. A Select Partition Type wizard screen appears (see Figure 3.4). Select the desired type of partition, and click **Next**.  
**Note:** Stripe Set Volume with parity is not currently supported on the 9900V.
2. The Specify Partition Size window appears (see Figure 3.5). Specify the desired partition size. If the size is greater than 1024 MB, the Disk Management will request confirmation to create the partition. Click **Next**.
3. The Assign Drive Letter or Path screen appears (see Figure 3.6). Select a drive letter. You may also state no drive letter or drive path. Click **Next**.
4. The Format Partition window appears (see Figure 3.7). Click **Next**.
5. If all partitions have been successfully completed, a window appears confirming this and listing all your selections. The word **Healthy** appears next to each device that has been successfully added.
6. Enter the following information on the Format panel (see Figure 3.9):
  - **File System to use:** Select **NTFS** (enables the Win2000 system to write to the disk).
  - **Allocation unit size:** **Default allocation size**. Do not change this entry.
  - **Volume label:** Enter a volume label, or leave this field blank for no label.
  - **Format Options:** Select **Perform a Quick Format** to decrease the time required to format the partition; select **Enable file and folder compression** only if you want to enable compression.
7. Select **Next** to format the partition as specified. When the format warning is displayed (this new format will erase all existing data on disk), select **OK** to continue. The Format panel displays the progress of the format partition operation (see Figure 3.10).
8. When the format complete message is displayed, select **OK**, and then select **Finish** to close the Format panel. Verify that the Disk Manager main panel displays the correct file system (NTFS) for the formatted partition (see Figure 3.11).
9. Repeat steps (1) through (8) for each new SCSI disk device. When you are finished creating and formatting partitions, exit the Disk Manager (select **Partition-Exit**). When the disk configuration change message comes up, select **Yes** to save your changes.  
**Note:** Make sure to make your new Emergency Repair Disk using RDISK.EXE.

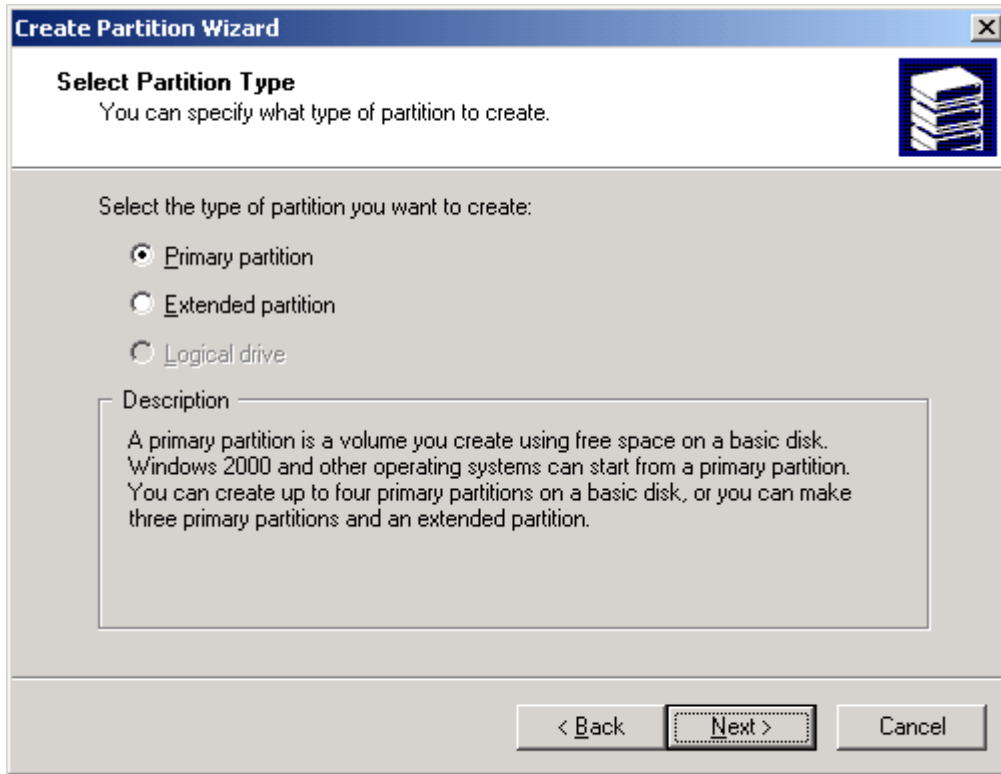


Figure 3.4 Create Partition Wizard Screen

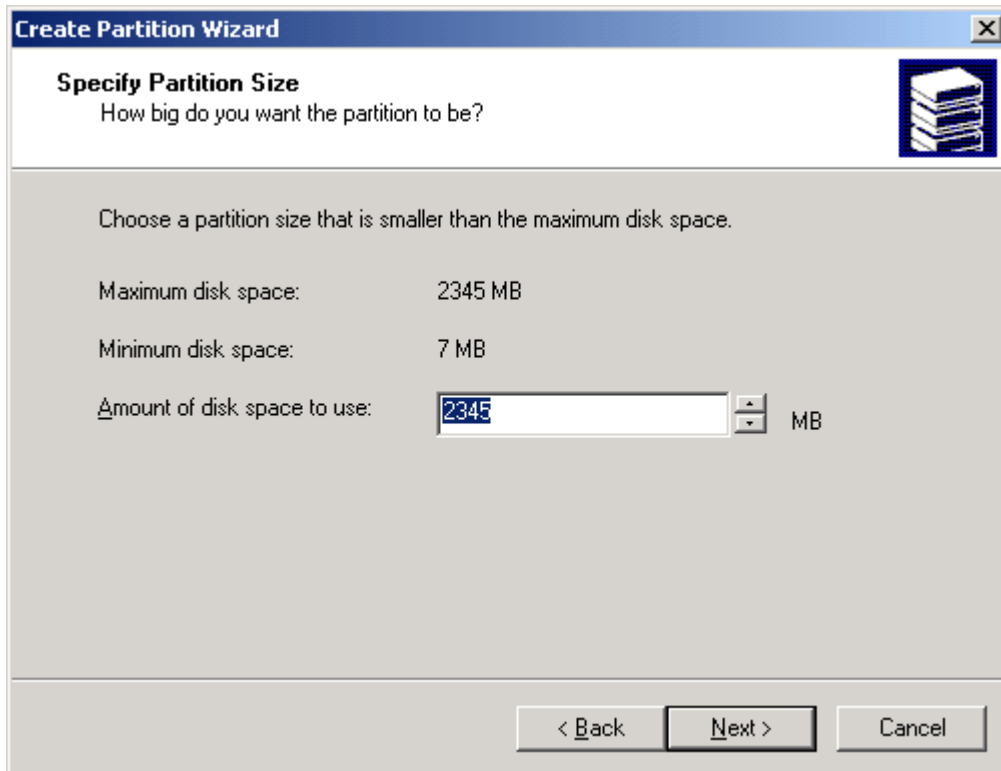


Figure 3.5 Specify Partition Size

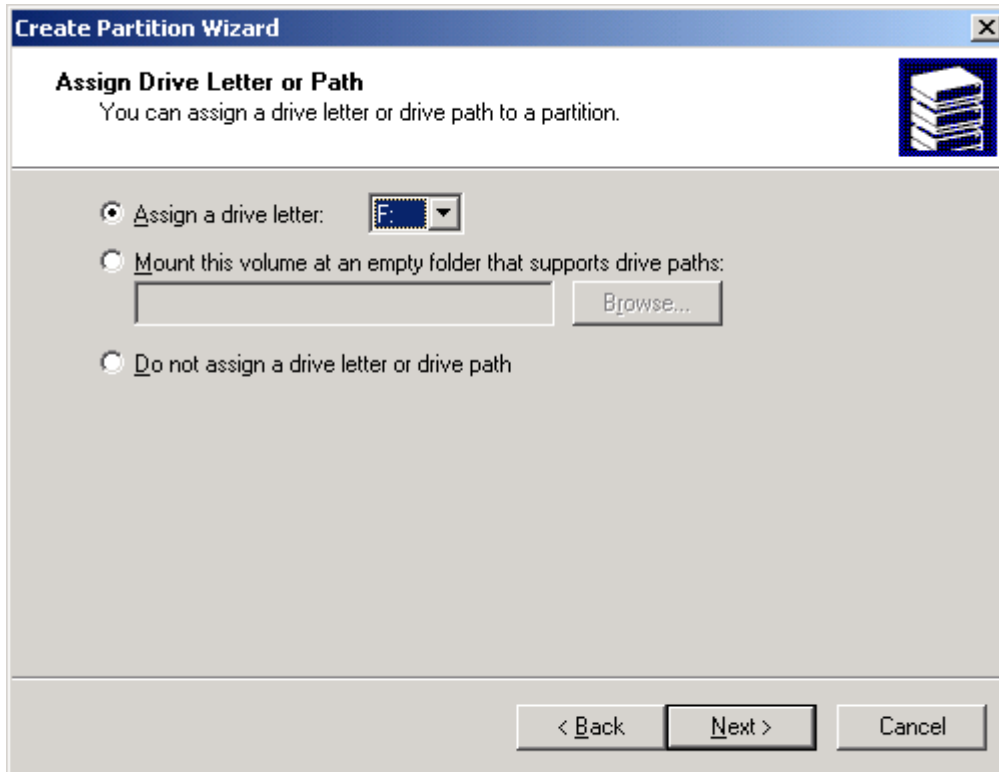


Figure 3.6 Assign Drive Letter or Path

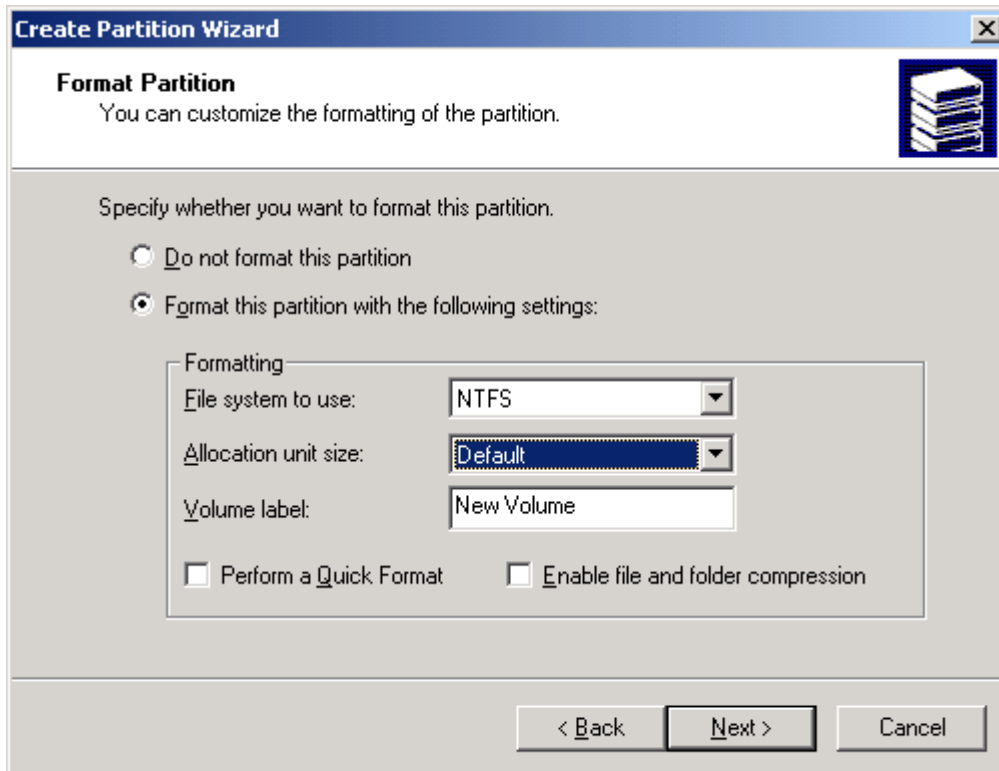


Figure 3.7 Format Partition Window



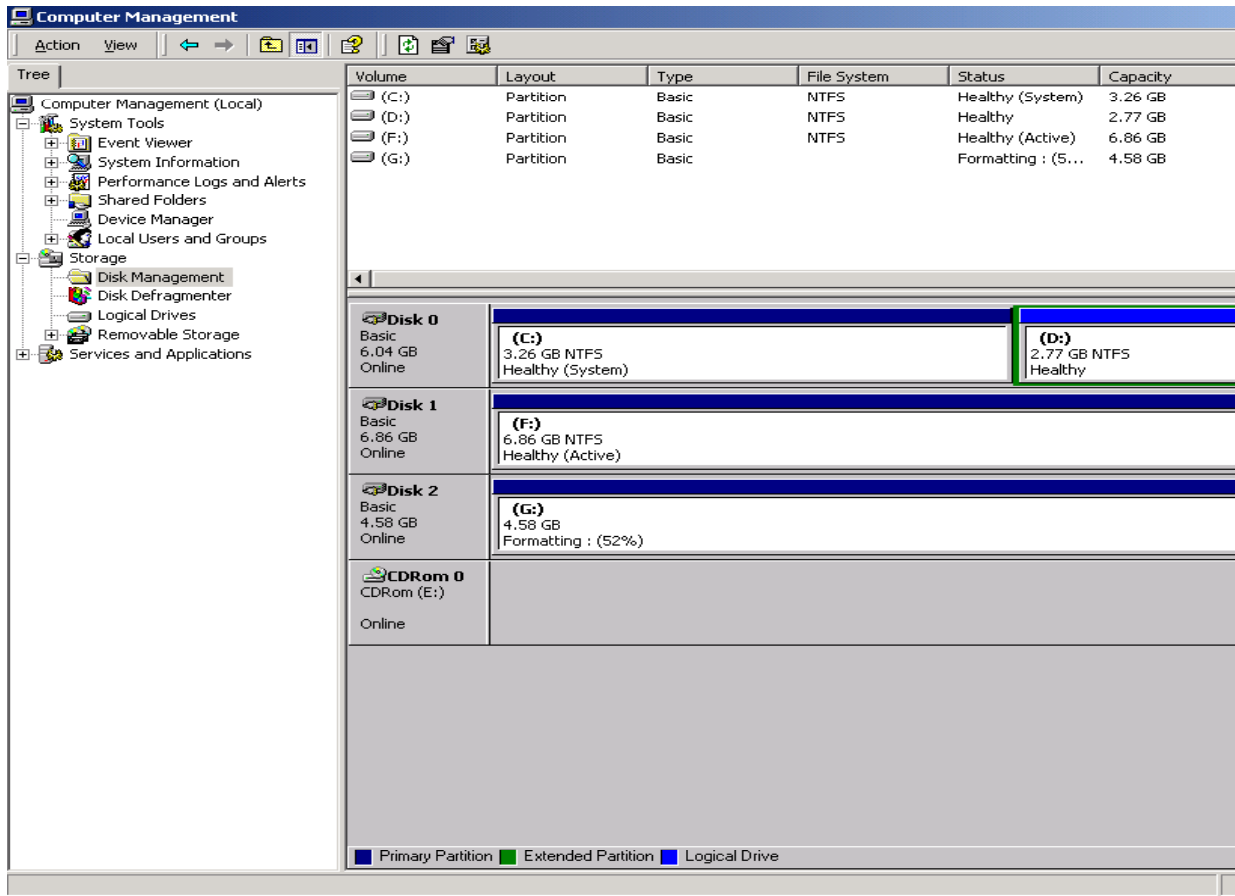
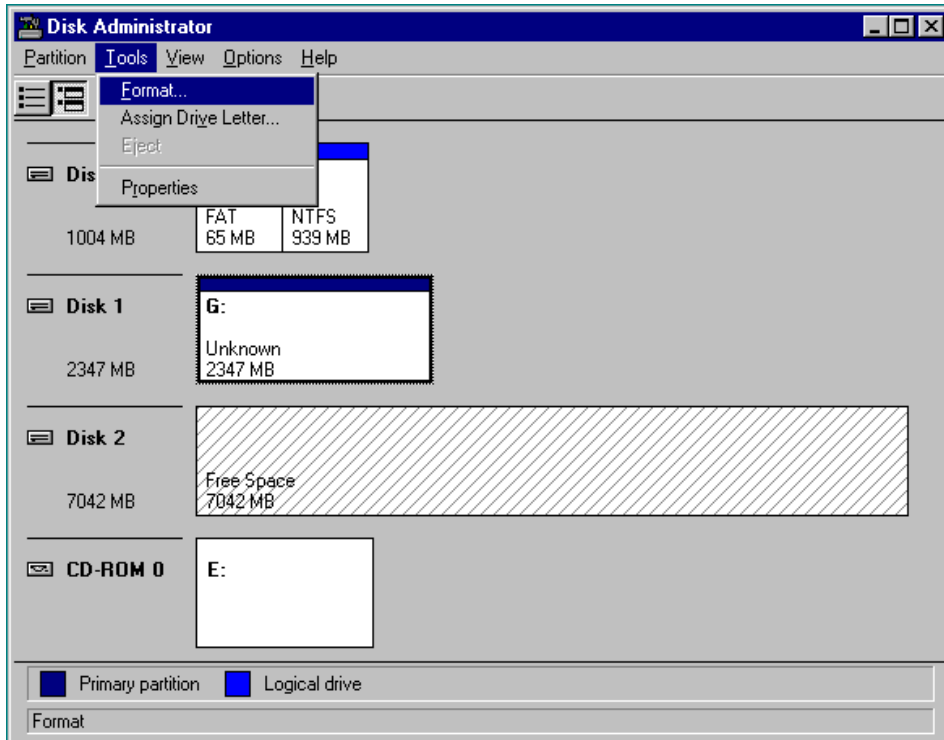
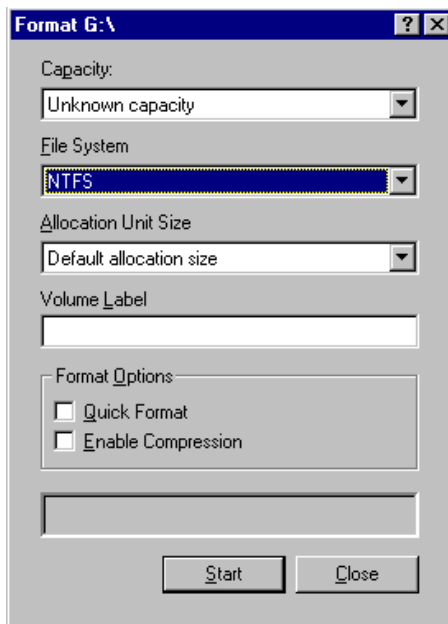


Figure 3.8 Successful Formatting Confirmation Window



**Note:** After committing the changes, notice that the newly created partition changes from **Unformatted** to **Unknown**.

**Figure 3.9** Opening the Format Panel



**Note:** In this example, the name of the partition being formatted is **G:**.

**Figure 3.10** Formatting the Partition

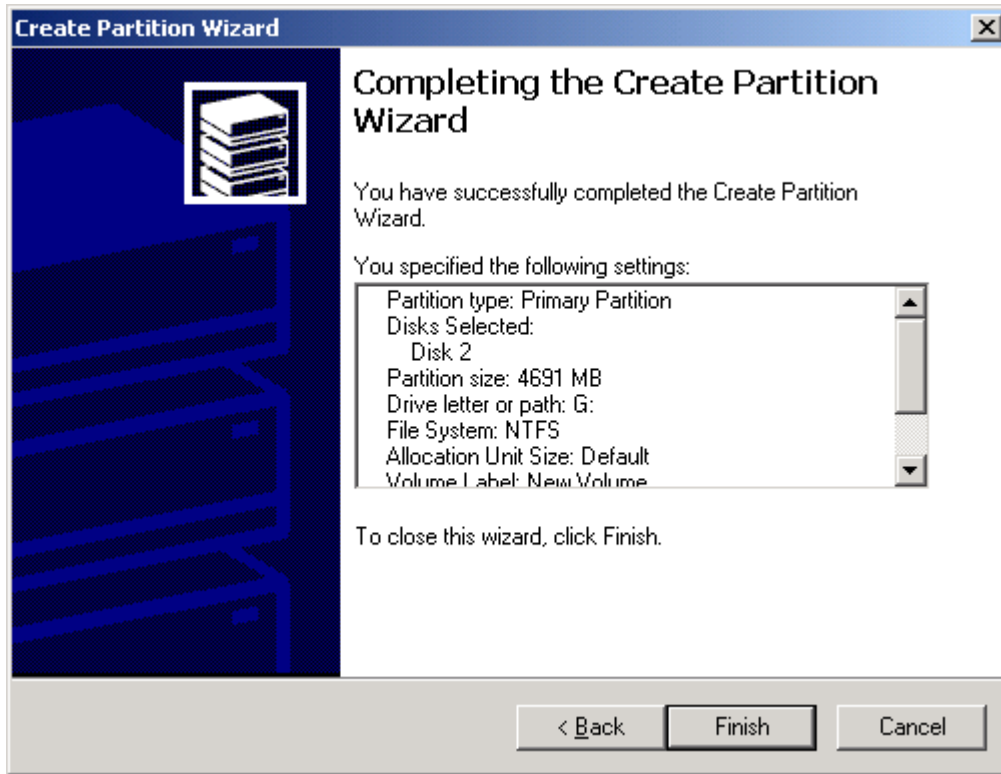


Figure 3.11 Verifying the Formatted Partition

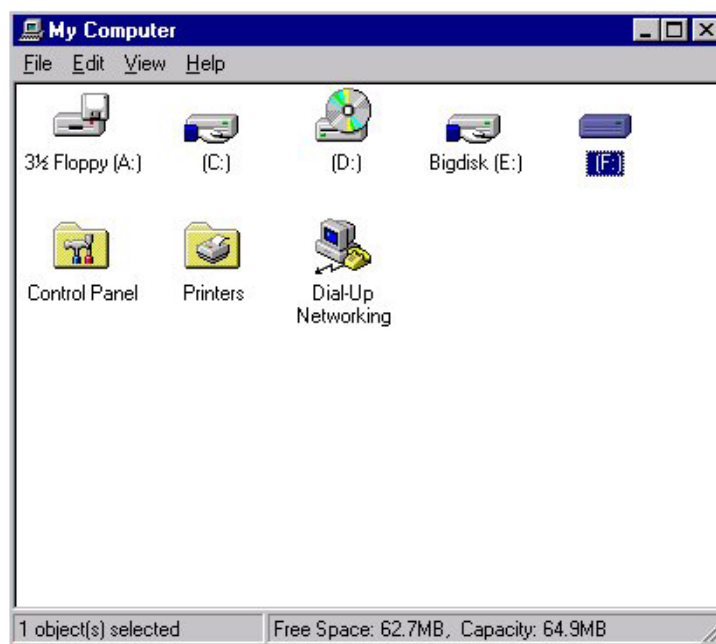
### 3.3 Verifying File System Operations

After creating and formatting the partitions, you need to verify that the file system is operating properly on each new SCSI disk device (OPEN-x, OPEN VLL, and LUSE). The file system enables the Win2000 system to access the devices. You can verify file system operation easily by copying a file onto each new device. If the file is copied successfully, this verifies that the file system is operating properly (i.e., the Win2000 system can access the new device).

**Note:** Do not perform this procedure for HRX devices. You must use the HRX File Conversion Utility (FCU) or File Access Library (FAL) to access the HRX devices.

To verify file system operations for the new SCSI disk devices:

1. From the Win2000 desktop, double-click on **My Computer** to display all connected devices. All newly partitioned disks should appear in this window (see Figure 3.12).
2. Select the device you want to verify, and then display its Properties (select the **File** menu and then select **Properties**, or right-mouse-click and then select **Properties**).
3. On the Properties panel (see Figure 3.13), verify that the properties are correct: label (optional), type, capacity, and file system.
4. Copy a file to the new device. Any file will do, so choose a small one to speed things up.
5. Display the contents of the new device to make sure that the copy operation completed successfully (see Figure 3.14). The copied file should be displayed with the correct file size. If desired, compare the copied file with the original file to verify no differences.
6. Delete the copied file from the new device, and verify the file was deleted successfully.
7. Repeat steps (2) through (6) for each new SCSI disk device.



**Note:** In this example, [F:] is the only new device.

**Figure 3.12** Displaying the Connected Devices

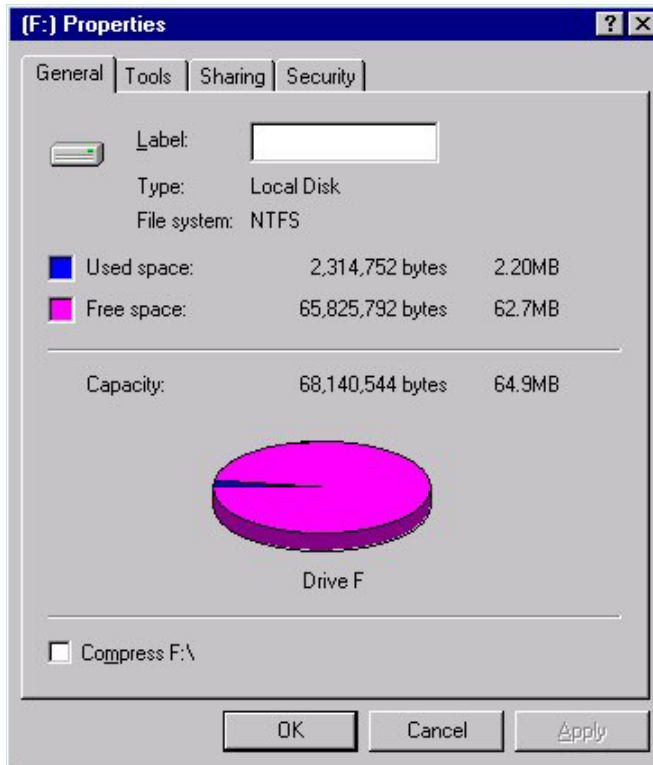


Figure 3.13 Verifying the New Device Properties

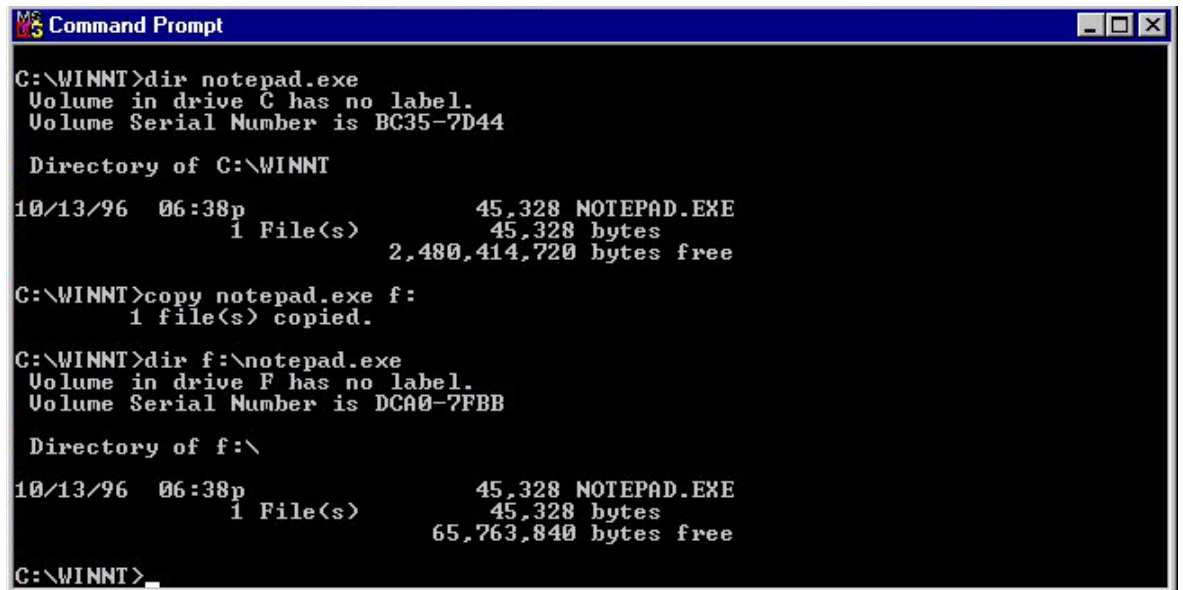


Figure 3.14 Verifying the File Copy Operation

### 3.4 Verifying Auto-Mount

The last step in configuring the new devices is to verify that all new devices are automatically mounted at system boot-up. To verify auto-mount of the new devices:

1. Shut down and then restart the Windows<sup>®</sup> 2000 system.
2. Open **My Computer**, and verify that all new SCSI disk devices are displayed.
3. Verify that the Win2000 system can access each new device by repeating the procedure in the previous section (section 3.3):
  - a) Verify the device properties for all new devices (refer to Figure 3.13).
  - b) Copy a file to each new device to make sure that the devices are functioning properly (refer to Figure 3.14).

## Chapter 4 Middleware and SNMP Configuration

The 9900V Series (9900V) subsystem supports many industry-standard middleware products which provide host failover, I/O path failover, and logical volume management functions. For the Windows® 2000 operating system, the 9900V supports the following middleware products:

- Microsoft® Cluster Server (MSCS) for host fail-over (see section 4.1), and
- Hitachi Dynamic Link Manager™ for I/O path failover (see section 4.2).

**Note:** The logical volume management functions are included in the Windows® 2000 operating system (e.g., Disk Administrator).

The 9900V subsystem also supports the industry-standard simple network management protocol (SNMP) for remote subsystem management from the UNIX®/PC server host. SNMP is used to transport management information between the 9900V SVP and the SNMP manager on the host. The SNMP agent on the 9900V SVP sends status information to the host(s) when requested by the host or when a significant event occurs.

**Note:** The user is responsible for configuring the middleware and SNMP management software on the UNIX®/PC server host. For assistance with host middleware and/or SNMP configuration, please refer to the user documentation, or contact the vendor's technical support.

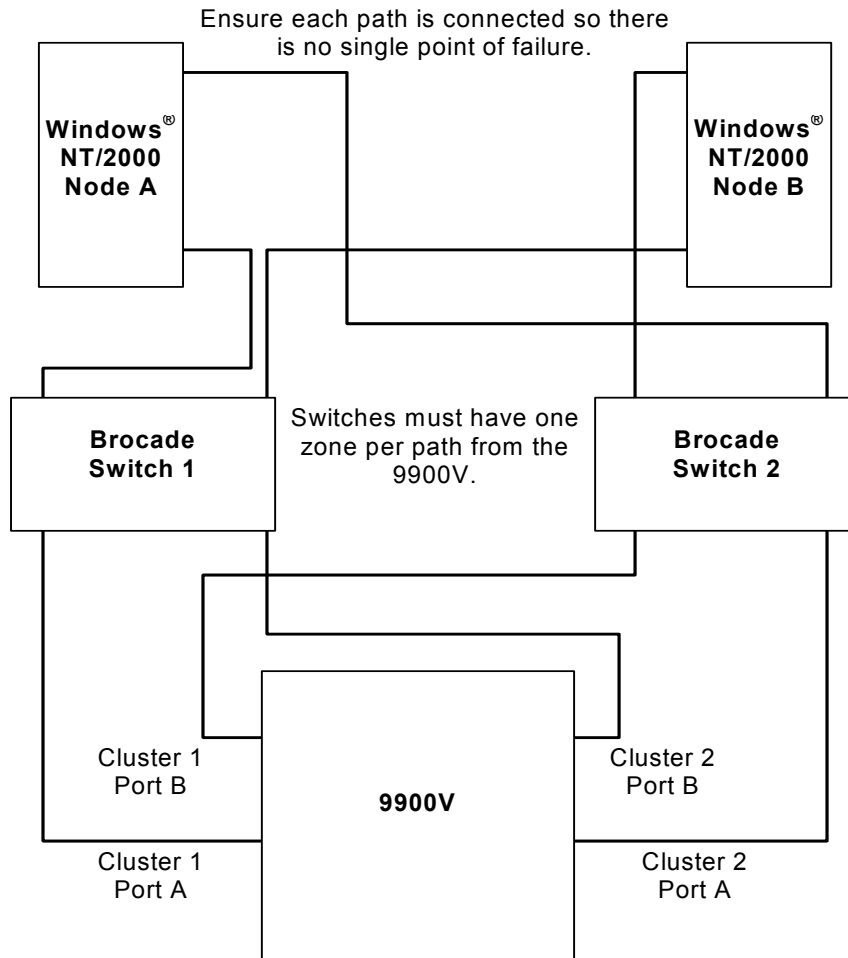
### 4.1 Host Fail-Over

The 9900V subsystem supports the Microsoft® Cluster Server (MSCS) host fail-over feature of the Windows® 2000 OS. Please contact Microsoft® for the latest information on MSCS.

**Note:** To configure an MSCS environment via fabric switch, zoning functionality is used per each host bus adapter.

When the 9900V devices will be operating in an MSCS environment, you must perform the following additional configuration activity: writing **signatures** (see section 3.1). For MSCS operations, allow the Windows® 2000 Disk Management to write a signature on each HRX device (e.g., 3390-3A/B/C, OPEN-3 for HRXoto).

After 9900V device configuration is complete, make sure to configure the MSCS software as needed to recognize the devices on the newly attached 9900V subsystem(s). For assistance with MSCS operations, please refer to the Microsoft® user documentation or contact Microsoft® customer support. See Figure 4.1 for an example of a path failover configuration with clustering.



The reason for the isolation between paths is that the cluster resource becomes a virtual device and will cause interaction between the paths when Hitachi Dynamic Link Manager (also HPM) and Clustering are being used together.

**Figure 4.1 Path Failover Configuration with 9900V Clustering**

## 4.2 Alternate I/O Path

The 9900V subsystem supports the Hitachi Dynamic Link Manager™ alternate I/O path middleware product for the Windows® 2000 OS. After you have completed 9900V device configuration as described in Chapter 3, make sure to configure Hitachi Dynamic Link Manager™ as needed to recognize the devices on the newly attached 9900V subsystem(s). For assistance with Hitachi Dynamic Link Manager™ operations, please refer to the *Hitachi 9200/9900/9900 V Series Dynamic Link Manager™ User's Guide for NT/2000 (MK-92DLM-129)* or contact the Hitachi Data Systems Support Center (see section 5.2).



### 4.3 SNMP Remote Subsystem Management

SNMP is a part of the TCP/IP protocol suite that supports maintenance functions for storage and communication devices. The 9900V subsystem utilizes SNMP to transfer status and management commands to the UNIX<sup>®</sup>/PC server host via the 9900V SVP (see Figure 4.2). When the SNMP manager requests status information or when a service information message (SIM) occurs, the SNMP agent on the 9900V SVP notifies the SNMP manager on the UNIX<sup>®</sup>/PC server host. Notification of 9900V error conditions is made in real time, providing UNIX<sup>®</sup> and PC server users with the same level of monitoring and support available to S/390<sup>®</sup> mainframe users. The SIM reporting via SNMP enables the user to monitor the 9900V subsystem from the UNIX<sup>®</sup>/PC server host without having to check the remote console for remote SIMs (R-SIMs).

When a SIM occurs, the 9900V SNMP agent initiates trap operations, which alert the SNMP manager of the SIM condition. The SNMP manager receives the SIM traps from the SNMP agent, and can request information from the SNMP agent at any time.

**Note:** The user is responsible for configuring the SNMP manager on the UNIX<sup>®</sup>/PC server host. For assistance with SNMP manager configuration on the UNIX<sup>®</sup>/PC server host, please refer to the user documentation, or contact the vendor's technical support.

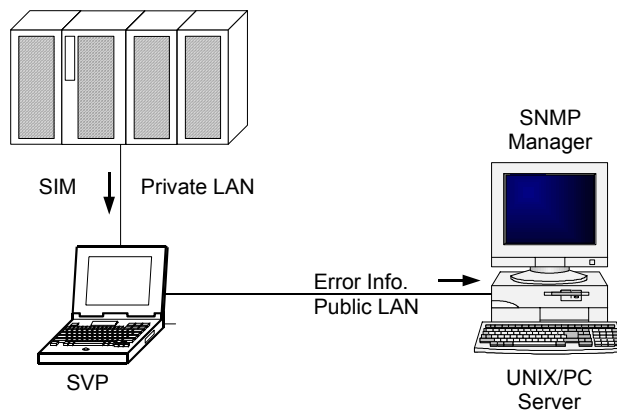


Figure 4.2 9900V SNMP Environment



# Chapter 5 Troubleshooting

## 5.1 Troubleshooting

The Hitachi Lightning 9900™ V Series (9900V) array subsystem provides continuous data availability. For troubleshooting information for the 9900V subsystem, please refer to the *Hitachi 9900™ V Series User and Reference Guide (MK-92RD100)*.

Table 5.1 lists potential error conditions during 9900V device configuration and provides instructions for resolving each condition. If you are unable to resolve an error condition, please ask your Hitachi Data Systems representative for help, or call the Hitachi Data Systems Support Center for assistance. See section 5.2 for instructions on calling the Hitachi Data Systems Support Center.

**Table 5.1 Troubleshooting**

Error Condition	Recommended Action
The devices are not recognized by the system.	Make sure that the READY indicator lights on the 9900V subsystem are ON. Make sure that the fibre cables are correctly installed and firmly connected.
The Win2000 system does not reboot properly after hard shutdown.	If the Win2000 system is powered off unexpectedly (without the normal shutdown process), wait three minutes before restarting the Win2000 system. This allows the 9900V's internal time-out process to purge all queued commands so that the 9900V is available (not busy) during system startup. If the Win2000 system is restarted too soon, the 9900V will continue trying to process the queued commands and the Win2000 system will not reboot successfully.

## 5.2 Calling the Support Center

If you need to call the Hitachi Data Systems Support Center, make sure to provide as much information about the problem as possible, including the circumstances surrounding the error or failure and the exact content of any error messages displayed on the host system(s). Please note the reference codes and severity levels of the 9900V SIMs.

The worldwide Hitachi Data Systems Support Centers are:

- Hitachi Data Systems North America/Latin America  
San Diego, California, USA  
1-800-348-4357
- Hitachi Data Systems Europe  
Contact Hitachi Data Systems Local Support
- Hitachi Data Systems Asia Pacific  
North Ryde, Australia  
011-61-2-9325-3300

## Appendix A SCSI TID Maps for Fibre-Channel Adapters

When an arbitrated loop (AL) is established or re-established, the port addresses are assigned automatically to prevent duplicate TIDs. When using the SCSI over fibre-channel protocol (FCP) there is no longer a need for target IDs in the traditional sense. SCSI is a bus-oriented protocol requiring each device to have a unique address since all commands go to all devices. For fibre channel, the AL-PA is used instead of the TID to direct packets to the desired destination. Unlike traditional SCSI, once control of the loop is acquired, a point-to-point connection is established from initiator to target. To enable transparent use of FCP, Windows® 2000 “maps” a TID to each AL-PA.

Tables A.1 and A.2 identify the fixed mappings between the bus/TID/LUN addresses assigned by Windows® 2000 and the FC native addresses (AL\_PA/SEL\_ID) for FC adapters. There are two potential mappings depending on the value of the ScanDown registry parameter:

- For ScanDown = 0 (default) see Table A.1.
- For ScanDown = 1 see Table A.2.

**Note:** When 9900V devices and other types of devices are connected in the same arbitrated loop, the mappings defined in Tables B.1 and B.2 cannot be guaranteed.

**Note:** The Emulex driver emulates six SCSI busses per adapter to map all 126 possible AL-PAs to target IDs. The first bus (bus 0) is a dummy bus.

**Table A.1 SCSI TID Map for Emulex FC Adapter (ScanDown=0)**

Bus #	TID	LUN	AL_PA	SEL_ID
0	0-31	0-7	NONE	NONE
1	0	0-7	0x01	0x7D
	1	0-7	0x02	0x7C
	2	0-7	0x04	0x7B
	3	0-7	0x08	0x7A
	4	0-7	0x0F	0x79
	5	0-7	0x10	0x78
	6	0-7	0x17	0x77
	7	0-7	0x18	0x76
	8	0-7	0x1B	0x75
	9	0-7	0x1D	0x74
	10	0-7	0x1E	0x73
	11	0-7	0x1F	0x72
	12	0-7	0x23	0x71
	13	0-7	0x25	0x70
	14	0-7	0x26	0x6F
	15	0-7	0x27	0x6E
	16	0-7	0x29	0x6D
	17	0-7	0x2A	0x6C
	18	0-7	0x2B	0x6B
	19	0-7	0x2C	0x6A
	20	0-7	0x2D	0x69
	21	0-7	0x2E	0x68
	22	0-7	0x31	0x67
	23	0-7	0x32	0x66
	24	0-7	0x33	0x65
	25	0-7	0x34	0x64
	26	0-7	0x35	0x63
	27	0-7	0x36	0x62
	28	0-7	0x39	0x61
	29	0-7	0x3A	0x60
	30	0-7	0x3C	0x5F
	31	0-7	NONE	NONE

Bus #	TID	LUN	AL_PA	SEL_ID
2	0	0-7	0x43	0x5E
	1	0-7	0x45	0x5D
	2	0-7	0x46	0x5C
	3	0-7	0x47	0x5B
	4	0-7	0x49	0x5A
	5	0-7	0x4A	0x59
	6	0-7	0x4B	0x58
	7	0-7	0x4C	0x57
	8	0-7	0x4D	0x56
	9	0-7	0x4E	0x55
	10	0-7	0x51	0x54
	11	0-7	0x52	0x53
	12	0-7	0x53	0x52
	13	0-7	0x54	0x51
	14	0-7	0x55	0x50
	15	0-7	0x56	0x4F
	16	0-7	0x59	0x4E
	17	0-7	0x5A	0x4D
	18	0-7	0x5C	0x4C
	19	0-7	0x63	0x4B
	20	0-7	0x65	0x4A
	21	0-7	0x66	0x49
	22	0-7	0x67	0x48
	23	0-7	0x69	0x47
	24	0-7	0x6A	0x46
	25	0-7	0x6B	0x45
	26	0-7	0x6C	0x44
	27	0-7	0x6D	0x43
	28	0-7	0x6E	0x42
	29	0-7	0x71	0x41
	30	0-7	0x72	0x40
	31	0-7	NONE	NONE

Bus #	TID	LUN	AL_PA	SEL_ID
3	0	0-7	0x73	0x3F
	1	0-7	0x74	0x3E
	2	0-7	0x75	0x3D
	3	0-7	0x76	0x3C
	4	0-7	0x79	0x3B
	5	0-7	0x7A	0x3A
	6	0-7	0x7C	0x39
	7	0-7	0x80	0x38
	8	0-7	0x81	0x37
	9	0-7	0x82	0x36
	10	0-7	0x84	0x35
	11	0-7	0x88	0x34
	12	0-7	0x8F	0x33
	13	0-7	0x90	0x32
	14	0-7	0x97	0x31
	15	0-7	0x98	0x30
	16	0-7	0x9B	0x2F
	17	0-7	0x9D	0x2E
	18	0-7	0x9E	0x2D
	19	0-7	0x9F	0x2C
	20	0-7	0xA3	0x2B
	21	0-7	0xA5	0x2A
	22	0-7	0xA6	0x29
	23	0-7	0xA7	0x28
	24	0-7	0xA9	0x27
	25	0-7	0xAA	0x26
	26	0-7	0xAB	0x25
	27	0-7	0xAC	0x24
	28	0-7	0xAD	0x23
	29	0-7	0xAE	0x22
	30	0-7	0xB1	0x21
	31	0-7	NONE	NONE

**Table A.1 SCSI TID Map for Emulex FC Adapter (ScanDown=0) (continued)**

Bus #	TID	LUN	AL_PA	SEL_ID
4	0	0-7	0xB2	0x20
	1	0-7	0xB3	0x1F
	2	0-7	0xB4	0x1E
	3	0-7	0xB5	0x1D
	4	0-7	0xB6	0x1C
	5	0-7	0xB9	0x1B
	6	0-7	0xBA	0x1A
	7	0-7	0xBC	0x19
	8	0-7	0xC3	0x18
	9	0-7	0xC5	0x17
	10	0-7	0xC6	0x16
	11	0-7	0xC7	0x15
	12	0-7	0xC9	0x14
	13	0-7	0xCA	0x13
	14	0-7	0xCB	0x12
	15	0-7	0xCC	0x11
	16	0-7	0xCD	0x10
	17	0-7	0xCE	0x0F
	18	0-7	0xD1	0x0E
	19	0-7	0xD2	0x0D
	20	0-7	0xD3	0x0C
	21	0-7	0xD4	0x0B
	22	0-7	0xD5	0x0A
	23	0-7	0xD6	0x09
	24	0-7	0xD9	0x08
	25	0-7	0xDA	0x07
	26	0-7	0xDC	0x06
	27	0-7	0xE0	0x05
	28	0-7	0xE1	0x04
	29	0-7	0xE2	0x03
	30	0-7	0xE4	0x02
	31	0-7	NONE	NONE

Bus #	TID	LUN	AL_PA	SEL_ID
5	0	0-7	0xE8	0x01
	1	0-7	0xEF	0x00
	2	0-7	NONE	NONE
	3	0-7	NONE	NONE
	4	0-7	NONE	NONE
	5	0-7	NONE	NONE
	6	0-7	NONE	NONE
	7	0-7	NONE	NONE
	8	0-7	NONE	NONE
	9	0-7	NONE	NONE
	10	0-7	NONE	NONE
	11	0-7	NONE	NONE
	12	0-7	NONE	NONE
	13	0-7	NONE	NONE
	14	0-7	NONE	NONE
	15	0-7	NONE	NONE
	16	0-7	NONE	NONE
	17	0-7	NONE	NONE
	18	0-7	NONE	NONE
	19	0-7	NONE	NONE
	20	0-7	NONE	NONE
	21	0-7	NONE	NONE
	22	0-7	NONE	NONE
	23	0-7	NONE	NONE
	24	0-7	NONE	NONE
	25	0-7	NONE	NONE
	26	0-7	NONE	NONE
	27	0-7	NONE	NONE
	28	0-7	NONE	NONE
	29	0-7	NONE	NONE
	30	0-7	NONE	NONE
	31	0-7	NONE	NONE

**Table A.2 SCSI TID Map for Emulex FC Adapter (ScanDown=1)**

Bus #	TID	LUN	AL_PA	SEL_ID
0	0-31	0-7	NONE	NONE
1	0	0-7	0xEF	0x00
	1	0-7	0xE8	0x01
	2	0-7	0xE4	0x02
	3	0-7	0xE2	0x03
	4	0-7	0xE1	0x04
	5	0-7	0xE0	0x05
	6	0-7	0xDC	0x06
	7	0-7	0xDA	0x07
	8	0-7	0xD9	0x08
	9	0-7	0xD6	0x09
	10	0-7	0xD5	0x0A
	11	0-7	0xD4	0x0B
	12	0-7	0xD3	0x0C
	13	0-7	0xD2	0x0D
	14	0-7	0xD1	0x0E
	15	0-7	0xCE	0x0F
	16	0-7	0xCD	0x10
	17	0-7	0xCC	0x11
	18	0-7	0xCB	0x12
	19	0-7	0xCA	0x13
	20	0-7	0xC9	0x14
	21	0-7	0xC7	0x15
	22	0-7	0xC6	0x16
	23	0-7	0xC5	0x17
	24	0-7	0xC3	0x18
	25	0-7	0xBC	0x19
	26	0-7	0xBA	0x1A
	27	0-7	0xB9	0x1B
	28	0-7	0xB6	0x1C
	29	0-7	0xB5	0x1D
	30	0-7	0xB4	0x1E
	31	0-7	NONE	NONE

Bus #	TID	LUN	AL_PA	SEL_ID
2	0	0-7	0xB3	0x1F
	1	0-7	0xB2	0x20
	2	0-7	0xB1	0x21
	3	0-7	0xAE	0x22
	4	0-7	0xAD	0x23
	5	0-7	0xAC	0x24
	6	0-7	0xAB	0x25
	7	0-7	0xAA	0x26
	8	0-7	0xA9	0x27
	9	0-7	0xA7	0x28
	10	0-7	0xA6	0x29
	11	0-7	0xA5	0x2A
	12	0-7	0xA3	0x2B
	13	0-7	0x9F	0x2C
	14	0-7	0x9E	0x2D
	15	0-7	0x9D	0x2E
	16	0-7	0x9B	0x2F
	17	0-7	0x98	0x30
	18	0-7	0x97	0x31
	19	0-7	0x90	0x32
	20	0-7	0x8F	0x33
	21	0-7	0x88	0x34
	22	0-7	0x84	0x35
	23	0-7	0x82	0x36
	24	0-7	0x81	0x37
	25	0-7	0x80	0x38
	26	0-7	0x7C	0x39
	27	0-7	0x7A	0x3A
	28	0-7	0x79	0x3B
	29	0-7	0x76	0x3C
	30	0-7	0x75	0x3D
	31	0-7	NONE	NONE

Bus #	TID	LUN	AL_PA	SEL_ID
3	0	0-7	0x74	0x3E
	1	0-7	0x73	0x3F
	2	0-7	0x72	0x40
	3	0-7	0x71	0x41
	4	0-7	0x6E	0x42
	5	0-7	0x6D	0x43
	6	0-7	0x6C	0x44
	7	0-7	0x6B	0x45
	8	0-7	0x6A	0x46
	9	0-7	0x69	0x47
	10	0-7	0x67	0x48
	11	0-7	0x66	0x49
	12	0-7	0x65	0x4A
	13	0-7	0x63	0x4B
	14	0-7	0x5C	0x4C
	15	0-7	0x5A	0x4D
	16	0-7	0x59	0x4E
	17	0-7	0x56	0x4F
	18	0-7	0x55	0x50
	19	0-7	0x54	0x51
	20	0-7	0x53	0x52
	21	0-7	0x52	0x53
	22	0-7	0x51	0x54
	23	0-7	0x4E	0x55
	24	0-7	0x4D	0x56
	25	0-7	0x4C	0x57
	26	0-7	0x4B	0x58
	27	0-7	0x4A	0x59
	28	0-7	0x49	0x5A
	29	0-7	0x47	0x5B
	30	0-7	0x46	0x5C
	31	0-7	NONE	NONE



**Table A.2 SCSI TID Map for Emulex FC Adapter (ScanDown=1) (continued)**

Bus #	TID	LUN	AL_PA	SEL_ID
4	0	0-7	0x45	0x5D
	1	0-7	0x43	0x5E
	2	0-7	0x3C	0x5F
	3	0-7	0x3A	0x60
	4	0-7	0x39	0x61
	5	0-7	0x36	0x62
	6	0-7	0x35	0x63
	7	0-7	0x34	0x64
	8	0-7	0x33	0x65
	9	0-7	0x32	0x66
	10	0-7	0x31	0x67
	11	0-7	0x2E	0x68
	12	0-7	0x2D	0x69
	13	0-7	0x2C	0x6A
	14	0-7	0x2B	0x6B
	15	0-7	0x2A	0x6C
	16	0-7	0x29	0x6D
	17	0-7	0x27	0x6E
	18	0-7	0x26	0x6F
	19	0-7	0x25	0x70
	20	0-7	0x23	0x71
	21	0-7	0x1F	0x72
	22	0-7	0x1E	0x73
	23	0-7	0x1D	0x74
	24	0-7	0x1B	0x75
	25	0-7	0x18	0x76
	26	0-7	0x17	0x77
	27	0-7	0x10	0x78
	28	0-7	0x0F	0x79
	29	0-7	0x08	0x7A
	30	0-7	0x04	0x7B
	31	0-7	NONE	NONE

Bus #	TID	LUN	AL_PA	SEL_ID
5	0	0-7	0x02	0x7C
	1	0-7	0x01	0x7D
	2	0-7	NONE	NONE
	3	0-7	NONE	NONE
	4	0-7	NONE	NONE
	5	0-7	NONE	NONE
	6	0-7	NONE	NONE
	7	0-7	NONE	NONE
	8	0-7	NONE	NONE
	9	0-7	NONE	NONE
	10	0-7	NONE	NONE
	11	0-7	NONE	NONE
	12	0-7	NONE	NONE
	13	0-7	NONE	NONE
	14	0-7	NONE	NONE
	15	0-7	NONE	NONE
	16	0-7	NONE	NONE
	17	0-7	NONE	NONE
	18	0-7	NONE	NONE
	19	0-7	NONE	NONE
	20	0-7	NONE	NONE
	21	0-7	NONE	NONE
	22	0-7	NONE	NONE
	23	0-7	NONE	NONE
	24	0-7	NONE	NONE
	25	0-7	NONE	NONE
	26	0-7	NONE	NONE
	27	0-7	NONE	NONE
	28	0-7	NONE	NONE
	29	0-7	NONE	NONE
	30	0-7	NONE	NONE
	31	0-7	NONE	NONE



## Acronyms and Abbreviations

AL	arbitrated loop
AL-PA	arbitrated loop physical address
ESCON®	Enterprise System Connection
FC	fibre channel
FICON™	Fibre Connection
HBA	host bus adapter
HDS	Hitachi Data Systems
HDLM	Hitachi Dynamic Link Manager
I/O	input/output
LDEV	logical device
LU	logical unit
LUN	logical unit number, logical unit
OFC	open fibre control
PC	personal computer system
PCI	power control interface
SCSI	small computer system interface
SIM	service information message
SNMP	simple network management protocol
TID	target ID
TOV	timeout value

